

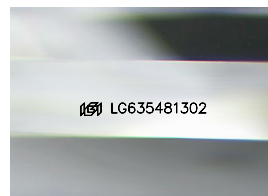
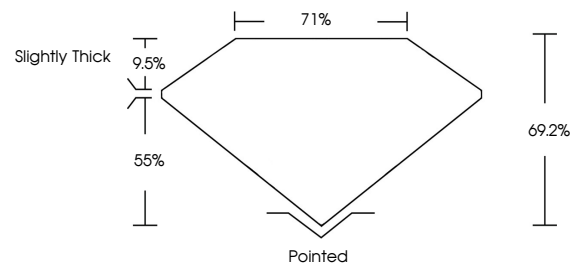


**ELECTRONIC COPY**

## LABORATORY GROWN DIAMOND REPORT

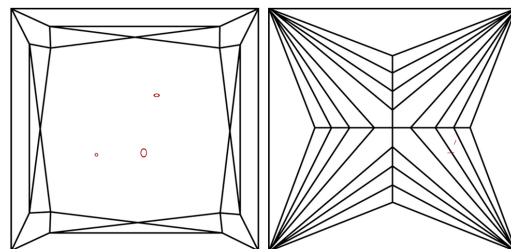
LG635481302  
Report verification at [igi.org](https://igi.org)

## PROPORTIONS



Sample Image Used

## CLARITY CHARACTERISTICS



## KEY TO SYMBOLS

Red symbols indicate internal characteristics.  
Green symbols indicate external characteristics.

## COLOR

D E F G H I J Faint Very Light Light

## CLARITY

IF	WVS <sup>1-2</sup>	VS <sup>1-2</sup>	SI <sup>1-2</sup>	I <sup>1-3</sup>
Internally Flawless	Very Very Slightly Included	Very Slightly Included	Slightly Included	Included



© IGI 2020, International Gemological Institute

FD - 10 20

**www.igi.org**

## DIAMOND REPORT



May 18, 2024

IGI Report Number **LG635481302**Description **LABORATORY GROWN DIAMOND**Shape and Cutting Style **PRINCESS CUT**

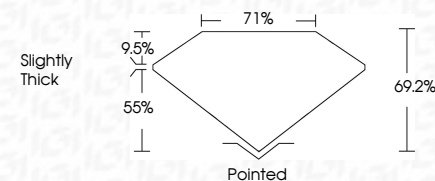
Measurements **6.95 X 6.72 X 4.65 MM**

## GRADING RESULTS

Carat Weight **1.97 CARAT**

Color Grade **G**

Clarity Grade VS 2



### ADDITIONAL GRADING INFORMATION

Polish **EXCELLENT**Symmetry **EXCELLENT**Fluorescence **NONE**Inscription(s)  LG635481302

Comments: This Laboratory Grown Diamond was created by Chemical Vapor Deposition (CVD) growth process and may include post-growth treatment.  
Type IIa



IG

May 18, 2024  
IGI Report No LG635481302  
PRINCESS CUT

6.95 X 6.72 X 4.65 MM	1.97 CARAT	G	VS 2		Pointed
Carat Weight			66.2%		EXCELLENT
Color Grade			71%		EXCELLENT
Clarity Grade			Slightly Thick		NONE
Depth					4mm 1.6565 4.992
Table					
Girdle					
Culet					
Polish					
Symmetry					
Fluorescence					
Measurements (mm)					

**Comments:**  
This Laboratory Grown Diamond was created by Chemical Vapor Deposition (CVD) growth process and may include post-growth treatment.