

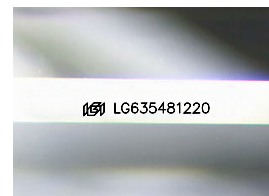
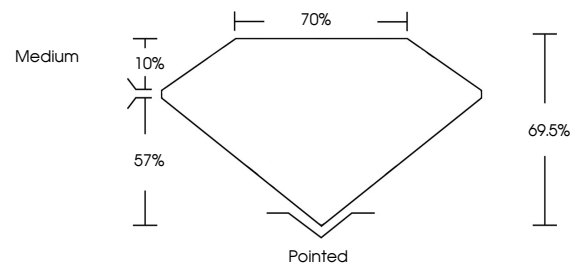


**ELECTRONIC COPY**

## LABORATORY GROWN DIAMOND REPORT

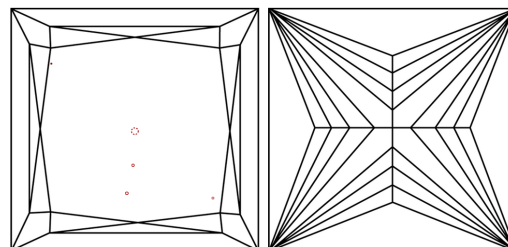
LG635481220  
Report verification at [igi.org](https://igi.org)

## PROPORTIONS



Sample Image Used

## CLARITY CHARACTERISTICS



### KEY TO SYMBOLS

Red symbols indicate internal characteristics.  
Green symbols indicate external characteristics.

## COLOR

D E F G H I J Faint Very Light Light

## CLARITY

IF	VVS <sup>1,2</sup>	VS <sup>1,2</sup>	SI <sup>1,2</sup>	I <sup>1,3</sup>
Internally Flawless	Very Very Slightly Included	Very Slightly Included	Slightly Included	Included



© IGI 2020, International Gemological Institute

FD - 10 20

## DIAMOND REPORT



May 17, 2024

IGI Report Number **LG635481220**

Description	LABORATORY GROWN DIAMOND
-------------	--------------------------

Shape and Cutting Style **PRINCESS CUT**

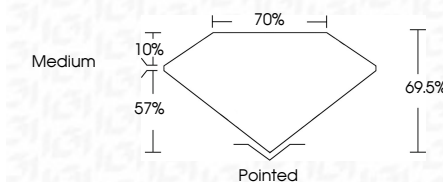
Measurements **7.28 X 7.08 X 4.92 MM**

## GRADING RESULTS

Carat Weight **2.17 CARATS**

Color Grade F

Clarity Grade VS 1



### ADDITIONAL GRADING INFORMATION

Polish **EXCELLENCE**Symmetry **EXCELLENCE**Fluorescence NONI

Inscription(s)  LG63548122

Comments: This Laboratory Grown Diamond was created by Chemical Vapor Deposition (CVD) growth process and may include post-growth treatment.  
Type IIa



May 17, 2024  
 LGI Report No LG635481220  
 PRINCESS CLIT

2.28 X 7.08 X 4.92 MM	2.17 CARATS	F	VS 1	96.5%	70%	Medium	Pointed	EXCELLENT	EXCELLENT	NONE
	Carat Weight		Clarity Grade	Depth	Table	Grade	Quiet	Polish	Symmetry	Fluorescence

**Comments:**  
This Laboratory Grown Diamond was created by Chemical Vapor Deposition (CVD) growth process and may include post-growth treatment.