



ELECTRONIC COPY

LG635481020
Report verification at igi.org

LABORATORY GROWN DIAMOND REPORT

May 18, 2024
IGI Report Number **LG635481020**
Description **LABORATORY GROWN DIAMOND**
Shape and Cutting Style **PRINCESS CUT**
Measurements **6.88 X 6.72 X 4.85 MM**

GRADING RESULTS

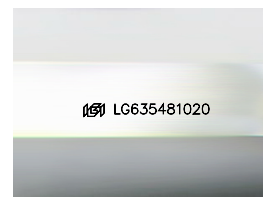
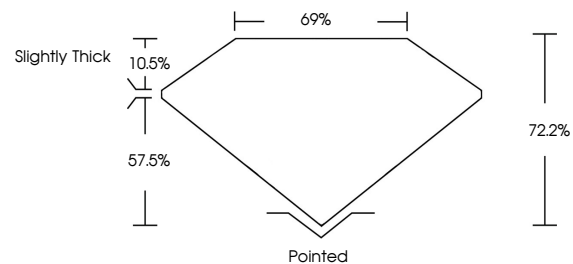
Carat Weight **1.93 CARAT**
Color Grade **F**
Clarity Grade **VS 1**

ADDITIONAL GRADING INFORMATION

Polish **EXCELLENT**
Symmetry **EXCELLENT**
Fluorescence **NONE**
Inscription(s) **IGI LG635481020**

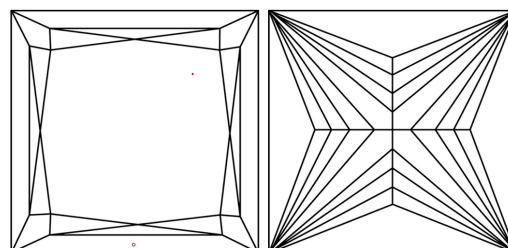
Comments: This Laboratory Grown Diamond was created by Chemical Vapor Deposition (CVD) growth process and may include post-growth treatment. Type IIa

PROPORTIONS



Sample Image Used

CLARITY CHARACTERISTICS



KEY TO SYMBOLS

Red symbols indicate internal characteristics.
Green symbols indicate external characteristics.

COLOR

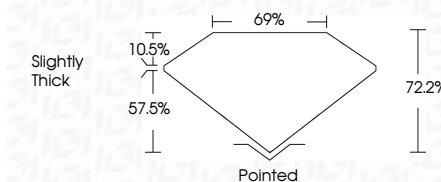
D E F G H I J Faint Very Light Light

CLARITY

| | | | | |
|---------------------|-----------------------------|------------------------|-------------------|------------------|
| IF | VS ¹⁻² | VS ¹⁻² | SI ¹⁻² | I ¹⁻³ |
| Internally Flawless | Very Very Slightly Included | Very Slightly Included | Slightly Included | Included |



May 18, 2024
IGI Report Number **LG635481020**
Description **LABORATORY GROWN DIAMOND**
Shape and Cutting Style **PRINCESS CUT**
Measurements **6.88 X 6.72 X 4.85 MM**
GRADING RESULTS
Carat Weight **1.93 CARAT**
Color Grade **F**
Clarity Grade **VS 1**



ADDITIONAL GRADING INFORMATION

Polish **EXCELLENT**
Symmetry **EXCELLENT**
Fluorescence **NONE**
Inscription(s) **IGI LG635481020**

Comments: This Laboratory Grown Diamond was created by Chemical Vapor Deposition (CVD) growth process and may include post-growth treatment. Type IIa



IGI

May 18, 2024
IGI Report No. **LG635481020**
PRINCESS CUT
6.88 X 6.72 X 4.85 MM
Carat Weight **1.93 CARAT**
Color Grade **F**
Clarity Grade **VS 1**
Depth **72.2%**
Table **69%**
Girdle **Slightly Thick**
Culet **Pointed**
Polish **EXCELLENT**
Symmetry **EXCELLENT**
Fluorescence **NONE**
Inscription(s) **IGI LG635481020**

Comments: This Laboratory Grown Diamond was created by Chemical Vapor Deposition (CVD) growth process and may include post-growth treatment. Type IIa