

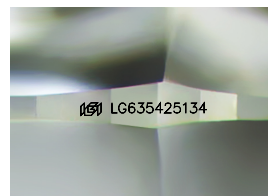
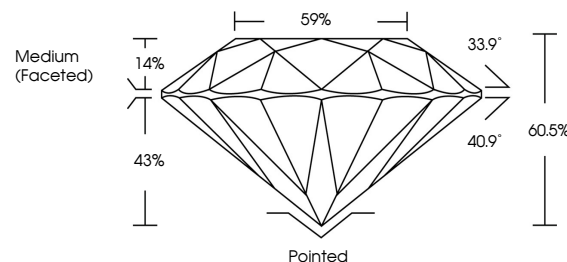


ELECTRONIC COPY

LABORATORY GROWN DIAMOND REPORT

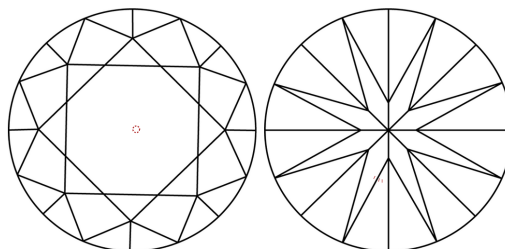
LG635425134
Report verification at lgi.org

PROPORTIONS



Sample Image Used

CLARITY CHARACTERISTICS



KEY TO SYMBOLS

Red symbols indicate internal characteristics.
Green symbols indicate external characteristics.

COLOR

D E F G H I J Faint Very Light Light

CLARITY

IF	VVS ¹⁻²	VS ¹⁻²	SI ¹⁻²	I ¹⁻³
Internally Flawless	Very Very Slightly Included	Very Slightly Included	Slightly Included	Included



© IGI 2020, International Gemological Institute

FD - 10 20

www.igi.org

DIAMOND REPORT



May 25, 2024

IGI Report Number **LG635425134**Description **LABORATORY GROWN DIAMOND**Shape and Cutting Style **ROUND BRILLIANT**

Measurements 9.36 - 9.40 X 5.67 MM

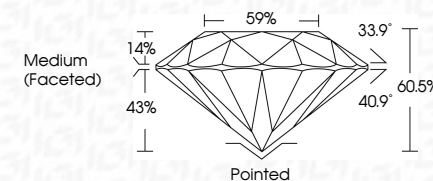
GRADING RESULTS

Carat Weight **3.06 CARATS**

Color Grade G

Clarity Grade VS 1

Cut Grade **IDEAL**



ADDITIONAL GRADING INFORMATION

Polish **EXCELLENT**Symmetry **EXCELLENT**Fluorescence **NONE**Inscription(s) LG635425134

Comments: This Laboratory Grown Diamond was created by Chemical Vapor Deposition (CVD) growth process.
Type IIa



May 26, 2024	3.05 CARATS	G	VS 1	Painted	Comments: The Laboratory Grown Diamond was created by Chemical Vapor Deposition (CVD) growth process. Type IIA
GI Report No LG358426134			IDEAL	EXCELLENT	
ROUND BRILLIANT			60.5%	NONE	
			95%		
			Medium (Faceted)		
	3.05 CARATS	G	Vs 1	Painted	Comments: The Laboratory Grown Diamond was created by Chemical Vapor Deposition (CVD) growth process. Type IIA
			IDEAL	EXCELLENT	
			60.5%	NONE	
			95%		
			Medium (Faceted)		
May 26, 2024	3.05 CARATS	G	Vs 1	Painted	Comments: The Laboratory Grown Diamond was created by Chemical Vapor Deposition (CVD) growth process. Type IIA
GI Report No LG358426134			IDEAL	EXCELLENT	
ROUND BRILLIANT			60.5%	NONE	
			95%		
			Medium (Faceted)		
	3.05 CARATS	G	Vs 1	Painted	Comments: The Laboratory Grown Diamond was created by Chemical Vapor Deposition (CVD) growth process. Type IIA
			IDEAL	EXCELLENT	
			60.5%	NONE	
			95%		
			Medium (Faceted)		
May 26, 2024	3.05 CARATS	G	Vs 1	Painted	Comments: The Laboratory Grown Diamond was created by Chemical Vapor Deposition (CVD) growth process. Type IIA
GI Report No LG358426134			IDEAL	EXCELLENT	
ROUND BRILLIANT			60.5%	NONE	
			95%		
			Medium (Faceted)		
	3.05 CARATS	G	Vs 1	Painted	Comments: The Laboratory Grown Diamond was created by Chemical Vapor Deposition (CVD) growth process. Type IIA
			IDEAL	EXCELLENT	
			60.5%	NONE	
			95%		
			Medium (Faceted)		
May 26, 2024	3.05 CARATS	G	Vs 1	Painted	Comments: The Laboratory Grown Diamond was created by Chemical Vapor Deposition (CVD) growth process. Type IIA
GI Report No LG358426134			IDEAL	EXCELLENT	
ROUND BRILLIANT			60.5%	NONE	
			95%		
			Medium (Faceted)		
	3.05 CARATS	G	Vs 1	Painted	Comments: The Laboratory Grown Diamond was created by Chemical Vapor Deposition (CVD) growth process. Type IIA
			IDEAL	EXCELLENT	
			60.5%	NONE	
			95%		
			Medium (Faceted)		
May 26, 2024	3.05 CARATS	G	Vs 1	Painted	Comments: The Laboratory Grown Diamond was created by Chemical Vapor Deposition (CVD) growth process. Type IIA
GI Report No LG358426134			IDEAL	EXCELLENT	
ROUND BRILLIANT			60.5%	NONE	
			95%		
			Medium (Faceted)		
	3.05 CARATS	G	Vs 1	Painted	Comments: The Laboratory Grown Diamond was created by Chemical Vapor Deposition (CVD) growth process. Type IIA
			IDEAL	EXCELLENT	
			60.5%	NONE	
			95%		
			Medium (Faceted)		
May 26, 2024	3.05 CARATS	G	Vs 1	Painted	Comments: The Laboratory Grown Diamond was created by Chemical Vapor Deposition (CVD) growth process. Type IIA
GI Report No LG358426134			IDEAL	EXCELLENT	
ROUND BRILLIANT			60.5%	NONE	
			95%		
			Medium (Faceted)		
	3.05 CARATS	<			