

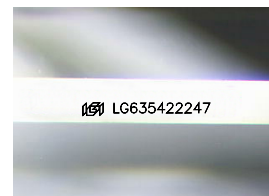
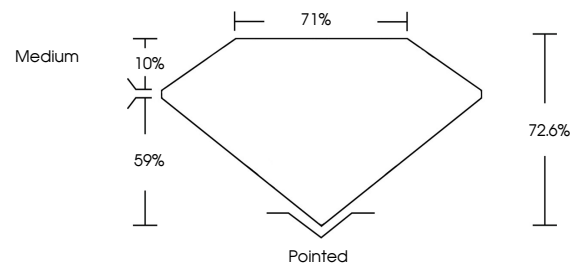


ELECTRONIC COPY

LABORATORY GROWN DIAMOND REPORT

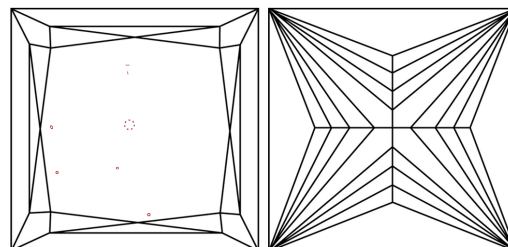
LG63542247
Report verification at igi.org

PROPORTIONS



Sample Image Used

CLARITY CHARACTERISTICS



KEY TO SYMBOLS

Red symbols indicate internal characteristics.
Green symbols indicate external characteristics.

COLOR

D E F G H I J Faint Very Light Light

CLARITY

IF	VVS ^{1,2}	VS ^{1,2}	SI ^{1,2}	I ^{1,3}
Internally Flawless	Very Very Slightly Included	Very Slightly Included	Slightly Included	Included



© IGI 2020, International Gemological Institute

FD - 10 20

DIAMOND REPORT



May 22, 2024

IGI Report Number **LG635422247**

Description	LABORATORY GROWN DIAMOND
-------------	--------------------------

Shape and Cutting Style **PRINCESS CUT**

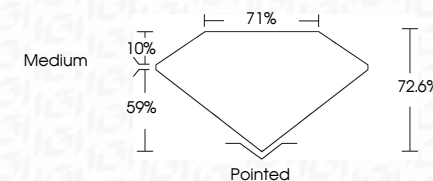
Measurements 7.73 X 7.52 X 5.46 MM

GRADING RESULTS

Carat Weight **2.77 CARATS**

Color Grade

Clarity Grade VS 2



ADDITIONAL GRADING INFORMATION

Polish **EXCELLENT**Symmetry **EXCELLENT**Fluorescence **NONE**Inscription(s) LG635422247

Comments: This Laboratory Grown Diamond was created by Chemical Vapor Deposition (CVD) growth process.
Type IIa



May 22, 2024
GI Report No LG635422247
PRINCESS CUT

7.73 X 7.62 X 6.46 MM	2.77 CARATS
Carat Weight	F
Color Grade	V8 2
Clarity Grade	72.6%
Depth	71%
Table	Medium
Girdle	Pointed
Quiet	EXCELLENT
Polish	EXCELLENT
Symmetry	NONE
Fluorescence	None
Production No.	4611164551200207

Comments:
This Laboratory Grown Diamond was created by Chemical Vapor Deposition (CVD) growth process.