



ELECTRONIC COPY

LABORATORY GROWN DIAMOND REPORT

May 16, 2024	
IGI Report Number	LG634496948
Description	LABORATORY GROWN DIAMOND
Shape and Cutting Style	ROUND BRILLIANT
Measurements	9.11 - 9.14 X 5.65 MM

GRADING RESULTS

Carat Weight	2.92 CARATS
Color Grade	F
Clarity Grade	VS 2
Cut Grade	IDEAL

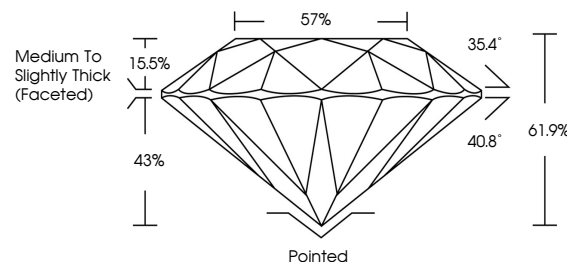
ADDITIONAL GRADING INFORMATION

Polish	EXCELLENT
Symmetry	EXCELLENT
Fluorescence	NONE
Inscription(s)	15 LG634496948

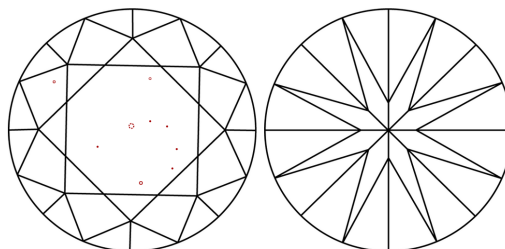
Comments: This Laboratory Grown Diamond was created by Chemical Vapor Deposition (CVD) growth process and may include post-growth treatment.
Type IIa

LG634496948
Report verification at lgi.org

PROPORTIONS

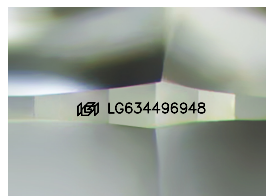


CLARITY CHARACTERISTICS



KEY TO SYMBOLS

Red symbols indicate internal characteristics.
Green symbols indicate external characteristics.



Sample Image Used

COLOR

D E F G H I J Faint Very Light Light

CLARITY

IF	VVS ¹⁻²	VS ¹⁻²	SI ¹⁻²	I ¹⁻³
Internally Flawless	Very Very Slightly Included	Very Slightly Included	Slightly Included	Included



© IGI 2020, International Gemological Institute

FD - 10 20

www.igi.org

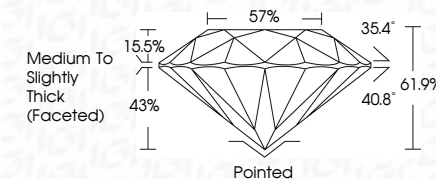
DIAMOND REPORT



May 16, 2024	
IGI Report Number	LG634496948
Description	LABORATORY GROWN DIAMOND
Shape and Cutting Style	ROUND BRILLIANT
Measurements	9.11 - 9.14 X 5.65 MM

GRADING RESULTS

Carat Weight	2.92 CARATS
Color Grade	F
Clarity Grade	VS 2
Cut Grade	IDEAL



ADDITIONAL GRADING INFORMATION

Polish	EXCELLENT
Symmetry	EXCELLENT
Fluorescence	NONE
Inscription(s)	(16) LG634496948

Comments: This Laboratory Grown Diamond was created by Chemical Vapor Deposition (CVD) growth process and may include post-growth treatment.
Type IIa



IG

May 16, 2024	2.92 CARATS
G Report No LG53469548	
ROUND BRILLIANT	
1.11 - 9.14 X 5.05 MM	
Carat Weight	Vs2
Color Grade	IDEAL
Clarity Grade	61.9%
Cut Grade	57%
Depth	Medium to Slightly Thick (Faceted)
Table	
Girdle	
Culet	Pointed
Polish	EXCELLENT
Symmetry	EXCELLENT
Fluorescence	NONE
Inscriptions(s)	LG53469548

Comments:

This Laboratory Grown Diamond was created by Chemical Vapor Deposition (CVD) growth process and may include trace growth treatment.

Comments:
This Laboratory Grown Diamond was created by Chemical Vapor Deposition (CVD) growth process and may include post-growth treatment.