



ELECTRONIC COPY

LABORATORY GROWN DIAMOND REPORT

| | |
|-------------------------|--------------------------|
| May 21, 2024 | |
| IGI Report Number | LG634445182 |
| Description | LABORATORY GROWN DIAMOND |
| Shape and Cutting Style | ROUND BRILLIANT |
| Measurements | 8.03 - 8.09 X 4.88 MM |

GRADING RESULTS

| | |
|---------------|------------|
| Carat Weight | 1.96 CARAT |
| Color Grade | F |
| Clarity Grade | VS 1 |
| Cut Grade | IDEAL |

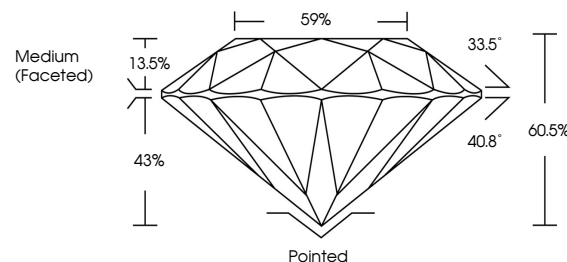
ADDITIONAL GRADING INFORMATION

| | |
|----------------|----------------|
| Polish | EXCELLENT |
| Symmetry | EXCELLENT |
| Fluorescence | NONE |
| Inscription(s) | 15 LG634445182 |

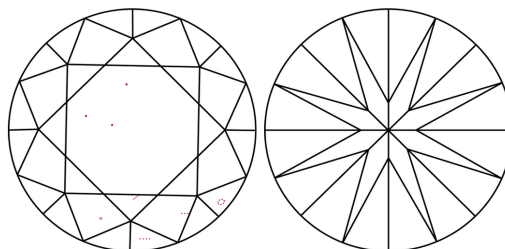
Comments: This Laboratory Grown Diamond was created by Chemical Vapor Deposition (CVD) growth process and may include post-growth treatment.
Type IIa

LG634445182
Report verification at lgi.org

PROPORTIONS

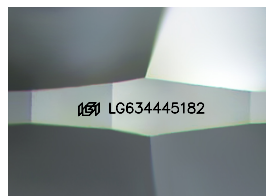


CLARITY CHARACTERISTICS



KEY TO SYMBOLS

Red symbols indicate internal characteristics.
Green symbols indicate external characteristics.



Sample Image Used

COLOR

D E F G H I J Faint Very Light Light

CLARITY

| IF | VVS ¹⁻² | VS ¹⁻² | SI ¹⁻² | I ¹⁻³ |
|---------------------|-----------------------------|------------------------|-------------------|------------------|
| Internally Flawless | Very Very Slightly Included | Very Slightly Included | Slightly Included | Included |



© IGI 2020, International Gemological Institute

FD - 10 20

www.igi.org

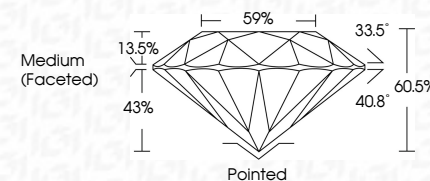
DIAMOND REPORT



| | |
|-------------------------|--------------------------|
| May 21, 2024 | |
| IGI Report Number | LG634445182 |
| Description | LABORATORY GROWN DIAMOND |
| Shape and Cutting Style | ROUND BRILLIANT |
| Measurements | 8.03 - 8.09 X 4.88 MM |

GRADING RESULTS

| | |
|---------------|------------|
| Carat Weight | 1.96 CARAT |
| Color Grade | F |
| Clarity Grade | VS 1 |
| Cut Grade | IDEAL |



ADDITIONAL GRADING INFORMATION

| | |
|----------------|-----------------|
| Polish | EXCELLENT |
| Symmetry | EXCELLENT |
| Fluorescence | NONE |
| Inscription(s) | 15 LG 634445182 |

Comments: This Laboratory Grown Diamond was created by Chemical Vapor Deposition (CVD) growth process and may include post-growth treatment.
Type IIa



IG

| | | | | | | | | | | | | | | | | |
|---|--------------------------|-----------------|-----------------------|--------------|-------------|---------------|-----------|-------|-------|--------|------------------|-----|-------|------|------------|---|
| May 21, 2024 | IGS Report No IGS4446182 | ROUND BRILLIANT | 0.03 - 0.09 X 4.88 MM | Carat Weight | Color Grade | Clarity Grade | Cut Grade | Depth | Table | Girdle | Medium (Faceted) | 95% | IDEAL | VS 1 | 1.96 CARAT | F |
| <p>Comments: This Laboratory Growth Diamond was created by Chemical Vapor Deposition (CVD) growth process and may include trace growth treatment.</p> | | | | | | | | | | | | | | | | |
| <p>Comments: IGS LG534446182</p> | | | | | | | | | | | | | | | | |
| <p>Fluorescence: None</p> | | | | | | | | | | | | | | | | |
| <p>Symmetry: Excellent</p> | | | | | | | | | | | | | | | | |
| <p>Polish: Excellent</p> | | | | | | | | | | | | | | | | |
| <p>Culet: Polished</p> | | | | | | | | | | | | | | | | |