



ELECTRONIC COPY

LABORATORY GROWN DIAMOND REPORT

May 22, 2024	
IGI Report Number	LG634445115
Description	LABORATORY GROWN DIAMOND
Shape and Cutting Style	ROUND BRILLIANT
Measurements	9.07 - 9.11 X 5.66 MM

GRADING RESULTS

Carat Weight	2.91 CARATS
Color Grade	G
Clarity Grade	VS 1
Cut Grade	IDEAL

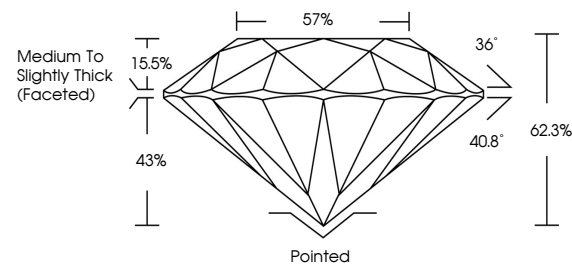
ADDITIONAL GRADING INFORMATION

Polish	EXCELLENT
Symmetry	EXCELLENT
Fluorescence	NONE
Inscription(s)	 LG634445115

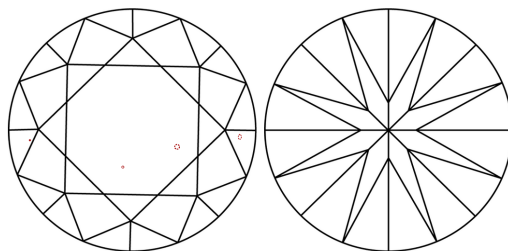
Comments: This Laboratory Grown Diamond was created by Chemical Vapor Deposition (CVD) growth process and may include post-growth treatment.
Type IIa

LG634445115
Report verification at igi.org

PROPORTIONS

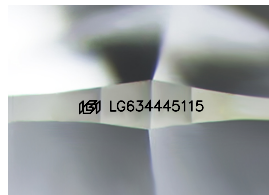


CLARITY CHARACTERISTICS



KEY TO SYMBOLS

Red symbols indicate internal characteristics.
Green symbols indicate external characteristics.



Sample Image Used

COLOR

D E F G H I J Faint Very Light Light

CLARITY

IF	VVS ¹⁻²	VS ¹⁻²	SI ¹⁻²	I ¹⁻³
Internally Flawless	Very Very Slightly Included	Very Slightly Included	Slightly Included	Included



© IGI 2020, International Gemological Institute

FD - 10 20

www.igi.org

DIAMOND REPORT



May 22, 2024

IGI Report Number **LG634445115**

Description	LABORATORY GROWN DIAMOND
-------------	--------------------------

Shape and Cutting Style **ROUND BRILLIANT**

Measurements 9.07 - 9.11 X 5.66 MM

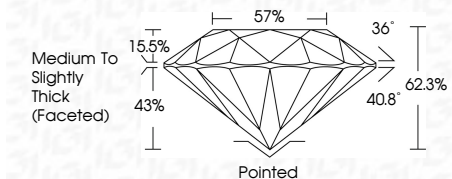
GRADING RESULTS

Carat Weight **2.91 CARATS**

Color Grade **G**

Clarity Grade VS 1

Cut Grade **IDEAL**



ADDITIONAL GRADING INFORMATION

Polish **EXCELLENCE**Symmetry **EXCELLENCE**Fluorescence NONIInscription(s) LG634445115

Comments: This Laboratory Grown Diamond was created by Chemical Vapor Deposition (CVD) growth process and may include post-growth treatment.
Type IIa



May 22, 2024	Report No. LG534446115	2/21 CABATS	VS 1	Ported	Comments: Gemstone is a Natural, Colorless, Round, Faceted, High Quality, Synthetic, Type IIA, Gemstone. The Gemstone was created by Chemical Vapor Deposition (CVD) growth process and may include post-growth treatment.
ROUND BRILLIANT		IDEAL	62.3%	EXCELLENT	
		62.3%	57%	EXCELLENT	
		Medium to Slightly Thick (Faceted)		NONE	
				1691 LG534446115	