

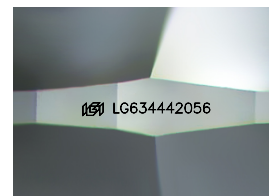
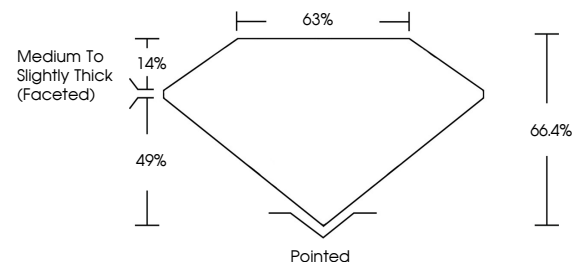


ELECTRONIC COPY

LABORATORY GROWN DIAMOND REPORT

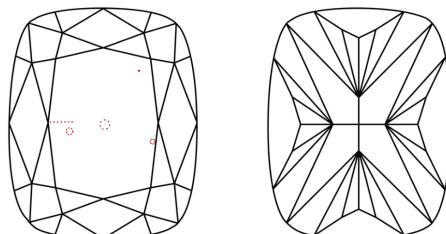
LG634442056
Report verification at lgi.org

PROPORTIONS



Sample Image Used

CLARITY CHARACTERISTICS



KEY TO SYMBOLS

Red symbols indicate internal characteristics.
Green symbols indicate external characteristics.

COLOR

D E F G H I J Faint Very Light Light

CLARITY

IF	VVS ^{1,2}	VS ^{1,2}	SI ^{1,2}	I ^{1,3}
Internally Flawless	Very Very Slightly Included	Very Slightly Included	Slightly Included	Included



© IGI 2020, International Gemological Institute

FD - 10 20

www.igi.org

DIAMOND REPORT



May 21, 2024

IGI Report Number LG634442056

Description **LABORATORY GROWN DIAMOND**Shape and Cutting Style **CUSHION BRILLIANT**

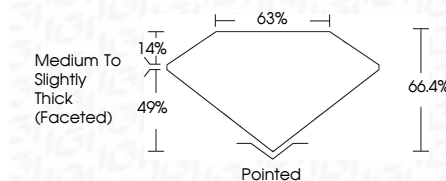
Measurements 8.99 X 6.61 X 4.39 MM

GRADING RESULTS

Carat Weight **2.07 CARATS**

Color Grade

Clarity Grade VS 2



ADDITIONAL GRADING INFORMATION

Polish **EXCELLENT**Symmetry **EXCELLENT**Fluorescence NONEInscription(s) LG634442056

Comments: This Laboratory Grown Diamond was created by Chemical Vapor Deposition (CVD) growth process and may include post-growth treatment.
Type IIa



May 21, 2024	2.07 CARATS	F	VS 2	66.4%	63%	Pointed	EXCELLENT	EXCELLENT	NONE	IGI LG584442056
SI Report No. LG584442056	Color Grade	Clarity Grade	Depth	Table	Girdle	Culet	Polish	Symmetry	Fluorescence	Inscriptions(s)
DUSHON BRILLIANT	Carat Weight	Color Grade	Clarity Grade	Depth	Table	Culet	Polish	Symmetry	Fluorescence	Inscriptions(s)
99.99 X 6.1 X 4.39 MM										

Comments: The Laboratory Grown Diamond was produced using High Pressure High Temperature (HPHT) growth process and may include post-growth treatment.

type IIA