

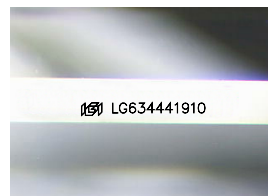
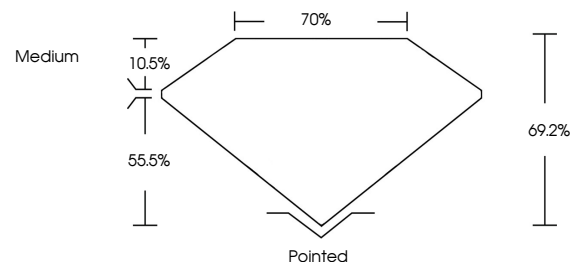


**ELECTRONIC COPY**

## LABORATORY GROWN DIAMOND REPORT

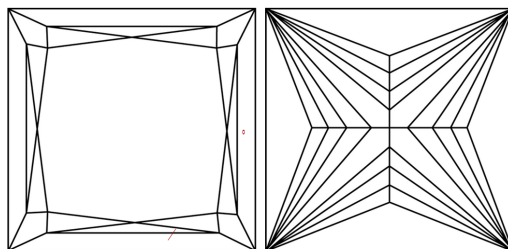
LG634441910  
Report verification at [lgi.org](https://lgi.org)

## PROPORTIONS



Sample Image Used

## CLARITY CHARACTERISTICS



## KEY TO SYMBOLS

Red symbols indicate internal characteristics.  
Green symbols indicate external characteristics.

**COLOR**

D E F G H I J Faint Very Light Light

## CLARITY

IF	VVS <sup>1-2</sup>	VS <sup>1-2</sup>	SI <sup>1-2</sup>	I <sup>1-3</sup>
Internally Flawless	Very Very Slightly Included	Very Slightly Included	Slightly Included	Included



© IGI 2020, International Gemological Institute

FD - 10 20

**www.igi.org**

## DIAMOND REPORT



May 22, 2024

IGI Report Number **LG634441910**Description **LABORATORY GROWN DIAMOND**Shape and Cutting Style **PRINCESS CUT**

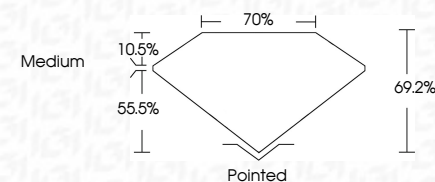
Measurements 7.90 X 7.65 X 5.29 MM

## GRADING RESULTS

Carat Weight **2.86 CARATS**

Color Grade F

Clarity Grade VS 2



### ADDITIONAL GRADING INFORMATION

Polish **EXCELLENT**Symmetry **EXCELLENT**Fluorescence **NONE**Inscription(s)  LG634441910

Comments: This Laboratory Grown Diamond was created by Chemical Vapor Deposition (CVD) growth process and may include post-growth treatment.  
Type IIa



IG

May 22, 2024  
GI Report No LG634441910  
PRINCESS CLIT

7.90 X 7.65 X 5.29 MM	2.86 CARATS
Carat Weight	F
Color Grade	VS 2
Clarity Grade	66.2%
Depth	70%
Table	Medium
Girdle	Pointed
Quiet	EXCELLENT
Polish	EXCELLENT
Symmetry	EXCELLENT
Fluorescence	NONE
Report #	CSA441070

**Comments:**  
This Laboratory Grown Diamond was created by Chemical Vapor Deposition (CVD) growth process and may include post-growth treatment.  
Type IIa