



ELECTRONIC COPY

LABORATORY GROWN DIAMOND REPORT

May 21, 2024	
IGI Report Number	LG634432453
Description	LABORATORY GROWN DIAMOND
Shape and Cutting Style	ROUND BRILLIANT
Measurements	10.11 - 10.18 X 6.28 MM

GRADING RESULTS

Carat Weight	4.03 CARATS
Color Grade	G
Clarity Grade	VS 1
Cut Grade	IDEAL

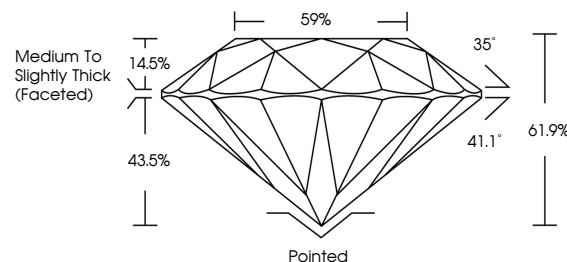
ADDITIONAL GRADING INFORMATION

Polish	EXCELLENT
Symmetry	EXCELLENT
Fluorescence	NONE
Inscription(s)	15 LG634432453

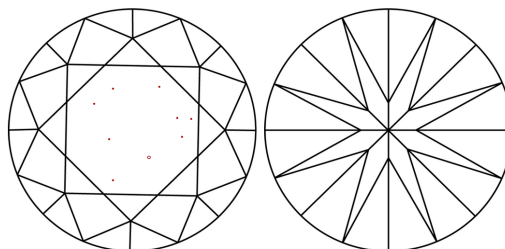
Comments: This Laboratory Grown Diamond was created by Chemical Vapor Deposition (CVD) growth process and may include post-growth treatment.
Type IIa

LG634432453
Report verification at lgi.org

PROPORTIONS

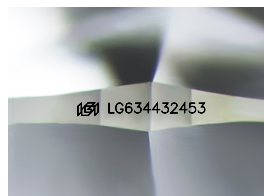


CLARITY CHARACTERISTICS



KEY TO SYMBOLS

Red symbols indicate internal characteristics.
Green symbols indicate external characteristics.



Sample Image Used

COLOR

D E F G H I J Faint Very Light Light

CLARITY

IF	VVS ¹⁻²	VS ¹⁻²	SI ¹⁻²	I ¹⁻³
Internally Flawless	Very Very Slightly Included	Very Slightly Included	Slightly Included	Included



© IGI 2020, International Gemological Institute

FD - 10 20

www.igi.org

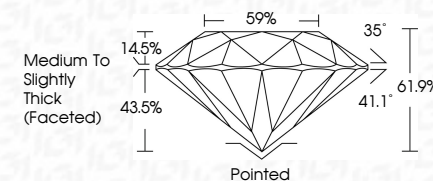
DIAMOND REPORT



May 21, 2024	
IGI Report Number	LG634432453
Description	LABORATORY GROWN DIAMOND
Shape and Cutting Style	ROUND BRILLIANT
Measurements	10.11 - 10.18 X 6.28 MM

GRADING RESULTS

Carat Weight	4.03 CARATS
Color Grade	G
Clarity Grade	VS 1
Cut Grade	IDEAL



ADDITIONAL GRADING INFORMATION

Polish	EXCELLENT
Symmetry	EXCELLENT
Fluorescence	NONE
Inscription(s)	 LG634432453

Comments: This Laboratory Grown Diamond was created by Chemical Vapor Deposition (CVD) growth process and may include post-growth treatment.
Type IIa



IG

May 21, 2024	4.03 CARATS
GI Report No LG534432453	
ROUND BRILLIANT	
10.11 - 10.18 X 4.28 MM	
Carat Weight	
Color Grade	G
Clarity Grade	VS 1
Cut Grade	IDEAL
Depth	61.9%
Table	69%
Girdle	Medium to Slightly Thick (Faceted)
Culet	Polished
Polish	EXCELLENT
Symmetry	EXCELLENT
Fluorescence	NONE
Inscriptions(s)	881 LG534432453
Comments:	
	This Laboratory Grown Diamond was created by Chemical Vapor Deposition (CVD) growth process and may include trace growth treatment.

Comments:
This Laboratory Grown Diamond was created by Chemical Vapor Deposition (CVD) growth process and may include post-growth treatment.