



ELECTRONIC COPY

LABORATORY GROWN DIAMOND REPORT

May 16, 2024	
IGI Report Number	LG634425398
Description	LABORATORY GROWN DIAMOND
Shape and Cutting Style	ROUND BRILLIANT
Measurements	10.43 - 10.48 X 6.23 MM

GRADING RESULTS

Carat Weight	4.14 CARATS
Color Grade	H
Clarity Grade	VVS 2
Cut Grade	IDEAL

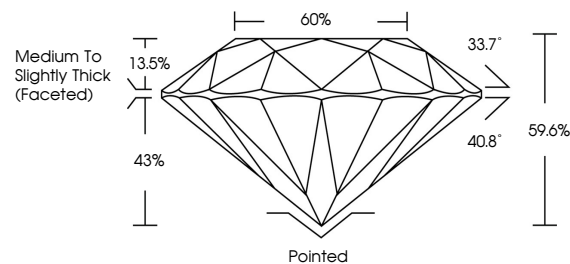
ADDITIONAL GRADING INFORMATION

Polish	EXCELLENT
Symmetry	EXCELLENT
Fluorescence	NONE
Inscription(s)	 LG634425398

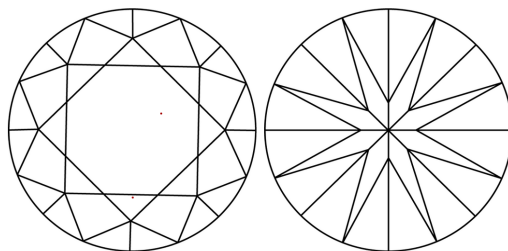
Comments: This Laboratory Grown Diamond was created by Chemical Vapor Deposition (CVD) growth process and may include post-growth treatment.
Type IIa

LG634425398
Report verification at igi.org

PROPORTIONS

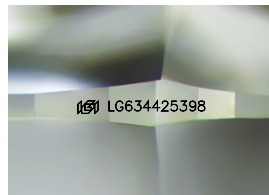


CLARITY CHARACTERISTICS



KEY TO SYMBOLS

Red symbols indicate internal characteristics.
Green symbols indicate external characteristics.



Sample Image Used

COLOR

D E F G H I J Faint Very Light Light

CLARITY

IF	WVS ¹⁻²	VS ¹⁻²	SI ¹⁻²	I ¹⁻³
Internally Flawless	Very Very Slightly Included	Very Slightly Included	Slightly Included	Included



© IGI 2020, International Gemological Institute

FD - 10 20

www.igi.org

DIAMOND REPORT



May 16, 2024

IGI Report Number **LG634425398**

Description	LABORATORY GROWN DIAMOND
-------------	--------------------------

Shape and Cutting Style **ROUND BRILLIANT**

Measurements 10.43 - 10.48 X 6.23 MM

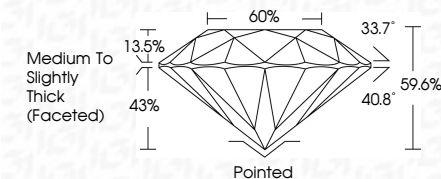
GRADING RESULTS

Carat Weight **4.14 CARATS**

Color Grade	H
-------------	---

Clarity Grade **VVS 2**

Cut Grade **IDEAL**



ADDITIONAL GRADING INFORMATION

Polish **EXCELLENCE**Symmetry **EXCELLENCE**Fluorescence NONIInscription(s) LG634425398

Comments: This Laboratory Grown Diamond was created by Chemical Vapor Deposition (CVD) growth process and may include post-growth treatment.
Type IIa



IG

May 16, 2024	
IGI Report No. LG58442598	
ROUND BRILLIANT	
10.43 x 10.48 x 6.23 MM	4.14 CARATS
Color Weight	H
Color Grade	VVS 2
Clarity Grade	IDEAL
Cut Grade	59.6%
Depth	60%
Table	Medium to slightly thick facet(s)
Gra de	Poished
Quiet	EXCELLENT
Polish	EXCELLENT
Symmetry	NONE
Fluorescence	IGI LG58442598
Inscriptions	
Comments:	This Laboratory Grown Diamond was created by Chemical Vapor Deposition (CVD) growth process and may include treatments.
Type Ila	