

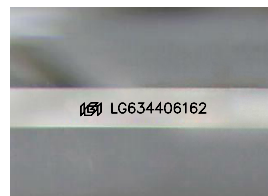
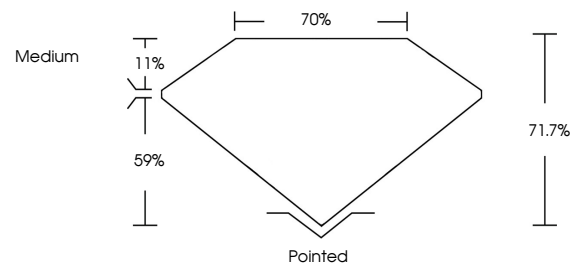


**ELECTRONIC COPY**

## LABORATORY GROWN DIAMOND REPORT

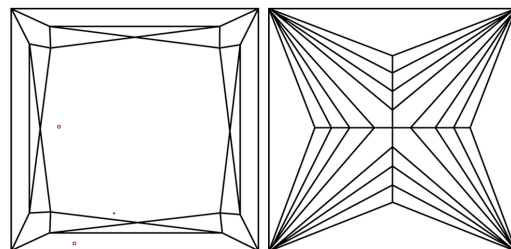
LG634406162  
Report verification at [igi.org](https://igi.org)

## PROPORTIONS



Sample Image Used

## CLARITY CHARACTERISTICS



### KEY TO SYMBOLS

Red symbols indicate internal characteristics.  
Green symbols indicate external characteristics.

## COLOR

D E F G H I J Faint Very Light Light

## CLARITY

IF	VVS <sup>1-2</sup>	VS <sup>1-2</sup>	SI <sup>1-2</sup>	I <sup>1-3</sup>
Internally Flawless	Very Very Slightly Included	Very Slightly Included	Slightly Included	Included



© IGI 2020, International Gemological Institute

FD - 10 20

## DIAMOND REPORT



May 16, 2024

IGI Report Number **LG634406162**Description **LABORATORY GROWN DIAMOND**Shape and Cutting Style **PRINCESS CUT**

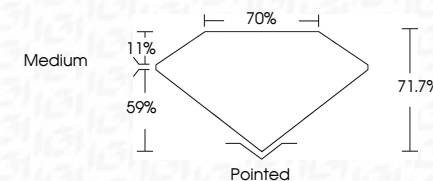
Measurements **7.88 X 7.63 X 5.47 MM**

## GRADING RESULTS

Carat Weight **2.72 CARATS**

Color Grade

Clarity Grade VS 1



### ADDITIONAL GRADING INFORMATION

Polish **EXCELLENT**Symmetry **EXCELLENT**Fluorescence **NONE**Inscription(s)  LG634406162

Comments: This Laboratory Grown Diamond was created by Chemical Vapor Deposition (CVD) growth process and may include post-growth treatment.  
Type IIa



May 14, 2024	272 CARATS	Vs 1	Polished	Comments: The Laboratory Crown Diamond was examined under standard conditions and found to be a natural, colorless, FLW, CVD growth process and may include post-growth treatment. Type IIG
GR Report No. LG33402162	272 CARATS	71.7%	EXCELLENT	
PRINCESS CUT	Color Grade	70%	EXCELLENT	
	Clarity Grade	Medium	NONE	
8.88 x 7.68 x 6.47 MM				689 LG33402162
	Carat Weight			
	Color Grade			
	Clarity Grade			
	Depth			
	Table			
	Girdle			
	Culet			
	Polish			
	Symmetry			
	Fluorescence			
	Inscriptions(s)			

**Comments:**  
This Laboratory Grown Diamond was created by Chemical Vapor Deposition (CVD) growth process and may include post-growth treatment.