

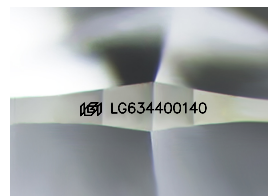
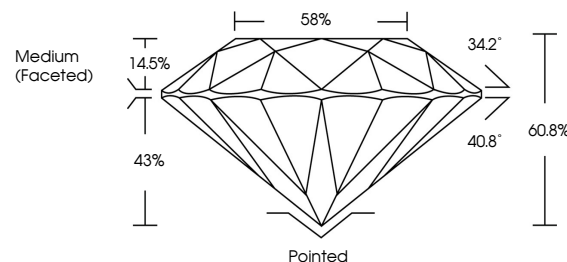


ELECTRONIC COPY

LABORATORY GROWN DIAMOND REPORT

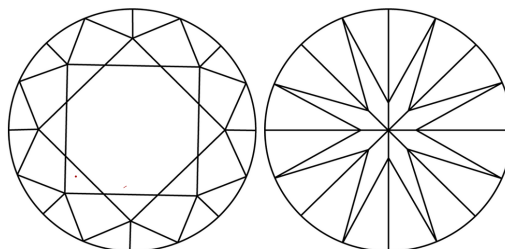
LG634400140
Report verification at lgi.org

PROPORTIONS



Sample Image Used

CLARITY CHARACTERISTICS



KEY TO SYMBOLS

Red symbols indicate internal characteristics.
Green symbols indicate external characteristics.

COLOR

D E F G H I J Faint Very Light Light

CLARITY

IF	VVS ¹⁻²	VS ¹⁻²	SI ¹⁻²	I ¹⁻³
Internally Flawless	Very Very Slightly Included	Very Slightly Included	Slightly Included	Included



© IGI 2020, International Gemological Institute

FD - 10 20

DIAMOND REPORT



May 10, 2024

IGI Report Number **LG634400140**Description **LABORATORY GROWN DIAMOND**Shape and Cutting Style **ROUND BRILLIANT**

Measurements 10.52 - 10.57 X 6.41 MM

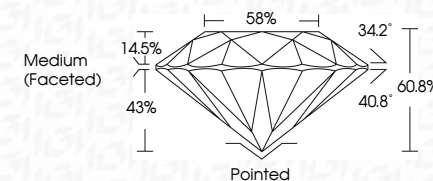
GRADING RESULTS

Carat Weight 4.38 CARATS

Color Grade G

Clarity Grade **VS 2**

Cut Grade **IDEAL**



ADDITIONAL GRADING INFORMATION

Polish **EXCELLENT**Symmetry **EXCELLENT**Fluorescence **NONE**Inscription(s) LG634400140

Comments: This Laboratory Grown Diamond was created by Chemical Vapor Deposition (CVD) growth process and may include post-growth treatment.
Type IIa



May 10, 2024	
G Report No LG93400740	
ROUND BRILLIANT	
TW-0.02 - 10.57 X 6.41 MM	4.38 CARATS
Cord Weight	G
Cair Grade	VVS 2
Clarity Grade	IDeal
Cut Grade	60.6%
Depth	58%
Table	Medium (Faceted)
Girdle	
Culet	Poished
Polish	EXCELLENT
Symmetry	EXCELLENT
Fluorescence	NONE
Inscriptions(s)	#61LG93400740

Comments:

The Laboratory Crown Diamond was analyzed by the GIA Gemological Institute of America (GIA) report process and may include post-growth treatment.

Type Ila