

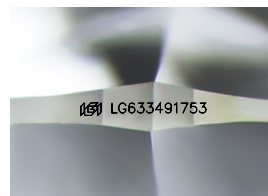
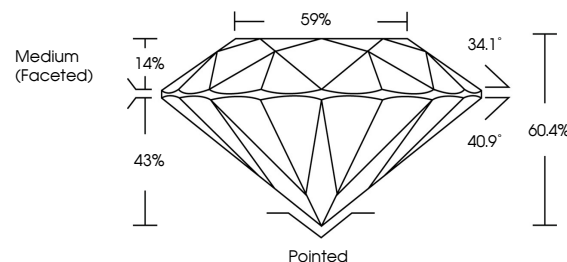


ELECTRONIC COPY

LABORATORY GROWN DIAMOND REPORT

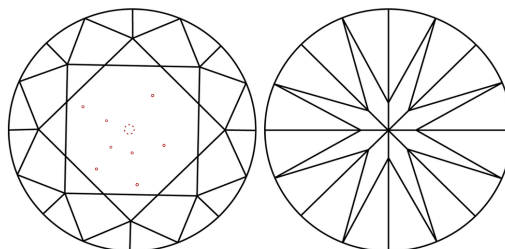
LG633491753
Report verification at lgi.org

PROPORTIONS



Sample Image Used

CLARITY CHARACTERISTICS



KEY TO SYMBOLS

Red symbols indicate internal characteristics.
Green symbols indicate external characteristics.

COLOR

D E F G H I J Faint Very Light Light

CLARITY

IF	VS ^{1,2}	VS ^{1,2}	SI ^{1,2}	I ^{1,3}
Internally Flawless	Very Very Slightly Included	Very Slightly Included	Slightly Included	Included



© IGI 2020, International Gemological Institute

FD - 10 20

www.igi.org

DIAMOND REPORT



May 11, 2024

IGI Report Number **LG633491753**

Description	LABORATORY GROWN DIAMOND
-------------	--------------------------

Shape and Cutting Style **ROUND BRILLIANT**

Measurements 9.02 - 9.08 X 5.46 MM

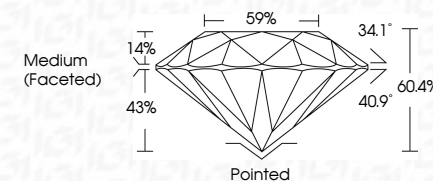
GRADING RESULTS

Carat Weight **2.71 CARATS**

Color Grade

Clarity Grade SI 1

Cut Grade **IDEAL**



ADDITIONAL GRADING INFORMATION

Polish **EXCELLENT**Symmetry **EXCELLENT**Fluorescence **NONE**Inscription(s) LG633491753

Comments: This Laboratory Grown Diamond was created by Chemical Vapor Deposition (CVD) growth process and may include post-growth treatment.
Type IIa



May 11, 2024	2.71 CARATS
G Report No LG6394753	F
ROUND BRILLIANT	S I 1
	IDICAL
	60.4%
	59%
	Medium (Faceted)
	Poished
	EXCELLENT
	EXCELLENT
	NONE
	I69JLG6394753
Carat Weight	
Color Grade	
Clarity Grade	
Cut Grade	
Depth	
Table	
Girdle	
Culet	
Polish	
Symmetry	
Fluorescence	
Inscriptions(s)	
Comments:	
The Laboratory Crown Diamond was grown from a CVD growth process and may include post-growth treatment.	
Type IIA	