



ELECTRONIC COPY

LABORATORY GROWN DIAMOND REPORT

| | |
|-------------------------|--------------------------|
| May 9, 2024 | |
| IGI Report Number | LG633486559 |
| Description | LABORATORY GROWN DIAMOND |
| Shape and Cutting Style | PRINCESS CUT |
| Measurements | 7.60 X 7.43 X 5.36 MM |

GRADING RESULTS

| | |
|---------------|-------------|
| Carat Weight | 2.52 CARATS |
| Color Grade | F |
| Clarity Grade | VS 2 |

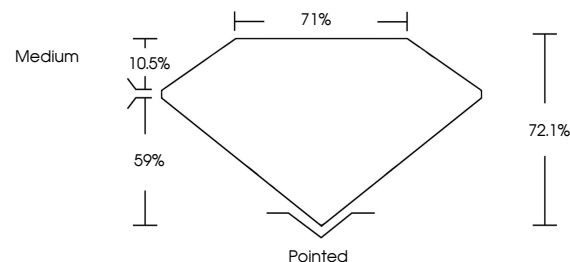
ADDITIONAL GRADING INFORMATION

| | |
|----------------|----------------|
| Polish | EXCELLENT |
| Symmetry | EXCELLENT |
| Fluorescence | NONE |
| Inscription(s) | 15 LG633486559 |

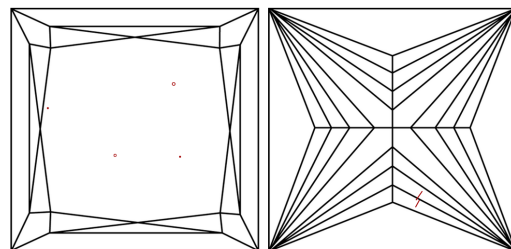
Comments: This Laboratory Grown Diamond was created by Chemical Vapor Deposition (CVD) growth process and may include post-growth treatment.
Type IIa

LG633486559
Report verification at igi.org

PROPORTIONS

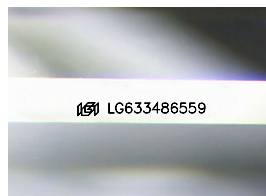


CLARITY CHARACTERISTICS



KEY TO SYMBOLS

Red symbols indicate internal characteristics.
Green symbols indicate external characteristics.



Sample Image Used

COLOR

D E F G H I J Faint Very Light Light

CLARITY

| IF | VVS ¹⁻² | VS ¹⁻² | SI ¹⁻² | I ¹⁻³ |
|---------------------|-----------------------------|------------------------|-------------------|------------------|
| Internally Flawless | Very Very Slightly Included | Very Slightly Included | Slightly Included | Included |



© IGI 2020, International Gemological Institute

FD - 10 20

www.igi.org

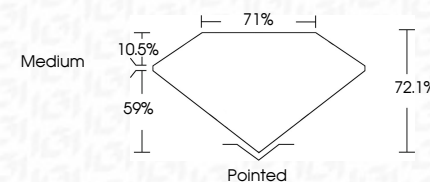
DIAMOND REPORT



| | |
|-------------------------|--------------------------|
| May 9, 2024 | |
| IGI Report Number | LG633486559 |
| Description | LABORATORY GROWN DIAMOND |
| Shape and Cutting Style | PRINCESS CUT |
| Measurements | 7.60 X 7.43 X 5.36 MM |

GRADING RESULTS

| | |
|---------------|-------------|
| Carat Weight | 2.52 CARATS |
| Color Grade | F |
| Clarity Grade | VS 2 |



ADDITIONAL GRADING INFORMATION

| | |
|----------------|---|
| Polish | EXCELLENT |
| Symmetry | EXCELLENT |
| Fluorescence | NONE |
| Inscription(s) |  LG633486559 |

Comments: This Laboratory Grown Diamond was created by Chemical Vapor Deposition (CVD) growth process and may include post-growth treatment.
Type IIa



May 9, 2024
GI Report No LG633486559
PRINCESS CUT

| | | |
|-----------------------|---------------|--------------------|
| 1.60 X 7.43 X 5.36 MM | Carat Weight | 2.82 CARATS |
| | Color Grade | F |
| | Clarity Grade | VS 2 |
| | Depth | 72.1% |
| | Table | 71% |
| | Grade | Medium |
| | Culet | Pointed |
| | Polish | EXCELLENT |
| | Symmetry | EXCELLENT |
| | Fluorescence | NONE |
| | | 4041 125459 045550 |

Comments:
This Laboratory Grown Diamond was created by Chemical Vapor Deposition (CVD) growth process and may include post-growth treatment.