



ELECTRONIC COPY

LABORATORY GROWN DIAMOND REPORT

May 15, 2024	
IGI Report Number	LG633426518
Description	LABORATORY GROWN DIAMOND
Shape and Cutting Style	ROUND BRILLIANT
Measurements	10.21 - 10.32 X 6.37 MM

GRADING RESULTS

Carat Weight	4.14 CARATS
Color Grade	G
Clarity Grade	VS 1
Cut Grade	EXCELLENT

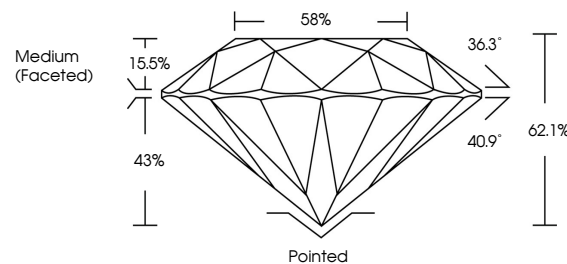
ADDITIONAL GRADING INFORMATION

Polish	EXCELLENT
Symmetry	EXCELLENT
Fluorescence	NONE
Inscription(s)	 LG633426518

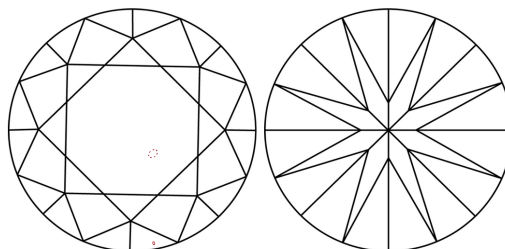
Comments: This Laboratory Grown Diamond was created by Chemical Vapor Deposition (CVD) growth process and may include post-growth treatment.
Type IIa

LG633426518
Report verification at lgi.org

PROPORTIONS

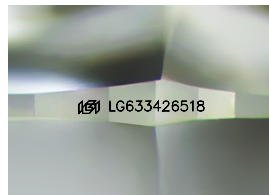


CLARITY CHARACTERISTICS



KEY TO SYMBOLS

Red symbols indicate internal characteristics.
Green symbols indicate external characteristics.



Sample Image Used

COLOR

D E F G H I J Faint Very Light Light

CLARITY

IF	WVS ¹⁻²	VS ¹⁻²	SI ¹⁻²	I ¹⁻³
Internally Flawless	Very Very Slightly Included	Very Slightly Included	Slightly Included	Included



© IGI 2020, International Gemological Institute

FD - 10 20

www.igi.org

DIAMOND REPORT



May 15, 2024

IGI Report Number **LG633426518**

Description	LABORATORY GROWN DIAMOND
-------------	--------------------------

Shape and Cutting Style **ROUND BRILLIANT**

Measurements 10.21 - 10.32 X 6.37 MM

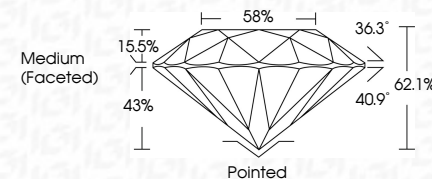
GRADING RESULTS

Carat Weight **4.14 CARATS**

Color Grade **G**

Clarity Grade VS 1

Cut Grade **EXCELLENT**



ADDITIONAL GRADING INFORMATION

Polish **EXCELLENT**Symmetry **EXCELLENT**

Fluorescence NONI

Inscription(s) LG633426518

Comments: This Laboratory Grown Diamond was created by Chemical Vapor Deposition (CVD) growth process and may include post-growth treatment.
Type IIa



IG

May 19, 2024	IGI Report No. IG333426518	ROUND BRILLIANT	10.21 - 10.32 X 6.37 MM	4.14 CARATS	G	VS 1	62.1%	58%	Medium (Faceted)	Parted	EXCELLENT	EXCELLENT	NONE	IGI LG333426518	<p>Comments:</p> <p>This is a Natural, Fancy, Crown Diamond was created by Chemical Vapor Deposition (CVD) growth process and may include post-growth treatment.</p> <p>Type IIa</p>
					Color Grade	Clarity Grade	Cut Grade	Depth	Table	Girdle	Fluorescence	Symmetry	Inscriptions(s)		