

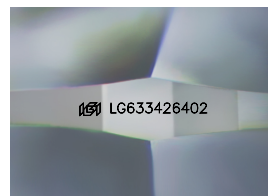
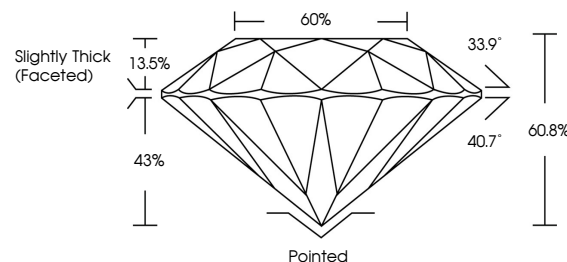


ELECTRONIC COPY

LABORATORY GROWN DIAMOND REPORT

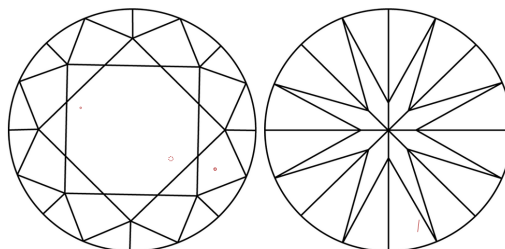
LG633426402
Report verification at lgi.org

PROPORTIONS



Sample Image Used

CLARITY CHARACTERISTICS



KEY TO SYMBOLS

Red symbols indicate internal characteristics.
Green symbols indicate external characteristics.

COLOR

D E F G H I J Faint Very Light Light

CLARITY

IF	VVS ¹⁻²	VS ¹⁻²	SI ¹⁻²	I ¹⁻³
Internally Flawless	Very Very Slightly Included	Very Slightly Included	Slightly Included	Included



© IGI 2020, International Gemological Institute

FD - 10 20

www.igi.org

DIAMOND REPORT



May 21, 2024

IGI Report Number **LG633426402**Description **LABORATORY GROWN DIAMOND**Shape and Cutting Style **ROUND BRILLIANT**

Measurements 9.32 - 9.37 X 5.68 MM

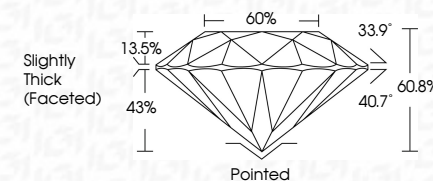
GRADING RESULTS

Carat Weight 3.09 CARATS

Color Grade

Clarity Grade SI 1

Cut Grade **IDEAL**



ADDITIONAL GRADING INFORMATION

Polish **EXCELLENT**Symmetry **EXCELLENT**Fluorescence **NONE**Inscription(s) LG633426402

Comments: This Laboratory Grown Diamond was created by Chemical Vapor Deposition (CVD) growth process and may include post-growth treatment.
Type IIa



IG

May 21, 2024
GI Report No LG633426402
ROUND BRILLIANT

9.32 - 9.37 X 5.68 MM	3.09 CARATS
Carat Weight	
Color Grade	F
Clarity Grade	S1
Cut Grade	IDEAL
Depth	60.8%
Table	60%
Grade	Slightly Thick (Excellent)

	Pointed EXCELLENT EXCELLENT NONE
Culet	
Polish	
Symmetry	
Fluorescence	

Comments:
This Laboratory Grown Diamond was created by Chemical Vapor Deposition (CVD) growth process and may include post-growth treatment.