

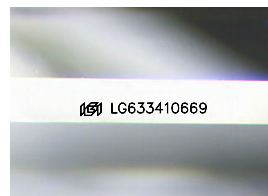
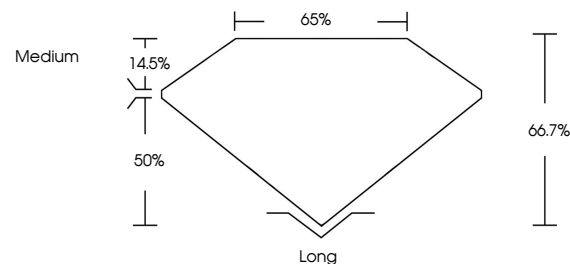


ELECTRONIC COPY

LABORATORY GROWN DIAMOND REPORT

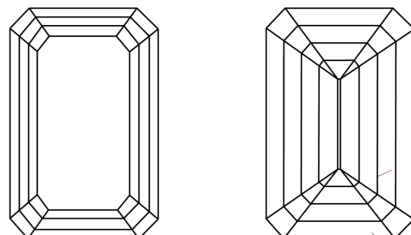
LG633410669
Report verification at igi.org

PROPORTIONS



Sample Image Used

CLARITY CHARACTERISTICS



KEY TO SYMBOLS

Red symbols indicate internal characteristics.
Green symbols indicate external characteristics.

COLOR

D E F G H I J Faint Very Light Light

CLARITY

IF	VVS ^{1,2}	VS ^{1,2}	SI ^{1,2}	I ^{1,3}
Internally Flawless	Very Very Slightly Included	Very Slightly Included	Slightly Included	Included



© IGI 2020, International Gemological Institute

FD - 10 20

www.igi.org

DIAMOND REPORT



May 15, 2024

IGI Report Number **LG633410669**Description **LABORATORY GROWN DIAMOND**Shape and Cutting Style **EMERALD CUT**

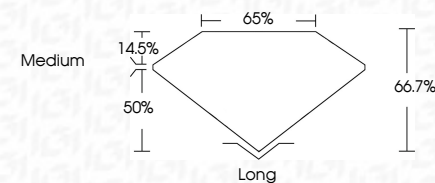
Measurements **7.78 X 5.56 X 3.71 MM**

GRADING RESULTS

Carat Weight 1.56 CARAT

Color Grade F

Clarity Grade SI 1



ADDITIONAL GRADING INFORMATION

Polish **EXCELLENT**Symmetry **EXCELLENT**Fluorescence **NONE**Inscription(s) LG633410669

Comments: This Laboratory Grown Diamond was created by Chemical Vapor Deposition (CVD) growth process and may include post-growth treatment.
Type IIa



May 15, 2024
GI Report No LG633410669

GI Report No. LG533410669	Carat Weight	1.56 CARAT
REFERENCE CUT	Color Grade	F
	Clarity Grade	SI 1
	Depth	66.7%
	Table	65%
	Grade	Medium
	Quiet	Long
	Polish	EXCELLENT
	Symmetry	EXCELLENT
	Fluorescence	NONE
	Inscriptions(s)	sent LG533410669

Comments:
This Laboratory Grown Diamond was created by Chemical Vapor Deposition (CVD) growth process and may include post-growth treatment.
Type IIa