

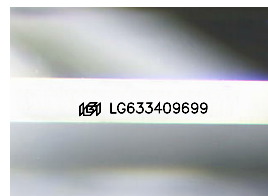
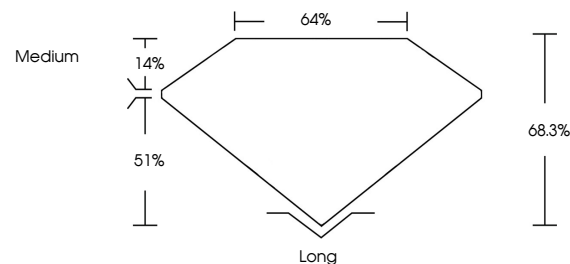


ELECTRONIC COPY

LABORATORY GROWN DIAMOND REPORT

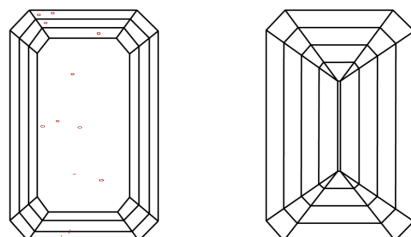
LG633409699
Report verification at lgi.org

PROPORTIONS



Sample Image Used

CLARITY CHARACTERISTICS



KEY TO SYMBOLS

Red symbols indicate internal characteristics.
Green symbols indicate external characteristics.

COLOR

D E F G H I J Faint Very Light Light

CLARITY

IF	VVS ¹⁻²	VS ¹⁻²	SI ¹⁻²	I ¹⁻³
Internally Flawless	Very Very Slightly Included	Very Slightly Included	Slightly Included	Included



© IGI 2020, International Gemological Institute

FD - 10 20

DIAMOND REPORT



May 12, 2024

IGI Report Number LG633409699

Description **LABORATORY GROWN DIAMOND**Shape and Cutting Style **EMERALD CUT**

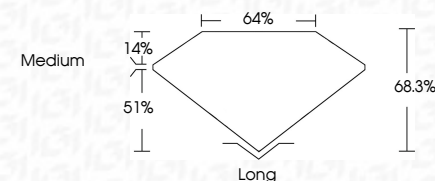
Measurements 8.76 X 5.90 X 4.03 MM

GRADING RESULTS

Carat Weight **2.07 CARATS**

Color Grade G

Clarity Grade VS 2



ADDITIONAL GRADING INFORMATION

Polish **EXCELLENT**Symmetry **EXCELLENT**Fluorescence **NONE**Inscription(s) LG633409699

Comments: This Laboratory Grown Diamond was created by Chemical Vapor Deposition (CVD) growth process and may include post-growth treatment.
Type IIa



IG

May 12, 2024
 IGI Report No LG633409699

<p> GI Report No LG533409699 General Cuit Size 7.5 X 5.9 X 4.03 MM Color Grade Clarity Grade Depth Table Grain Weight VS 2 Fluorescence 68.3% Transmittance 64% Medium Long Excellent Excellent None None </p>	<p> 2.07 CARATS G </p>
---	---

Comments:
This Laboratory Grown Diamond was created by Chemical Vapor Deposition (CVD) growth process and may include post-growth treatment.