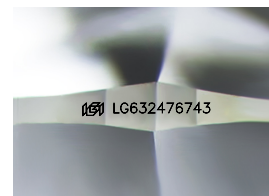
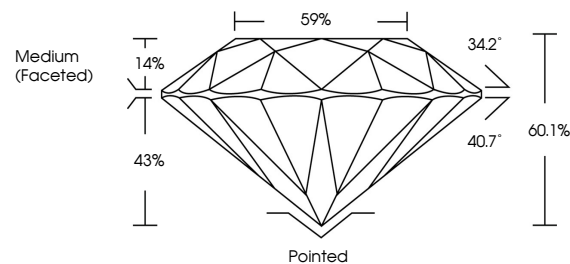


ELECTRONIC COPY

LABORATORY GROWN DIAMOND REPORT

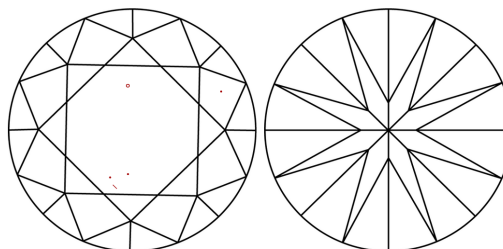
LG632476743
Report verification at igi.org

PROPORTIONS



Sample Image Used

CLARITY CHARACTERISTICS



KEY TO SYMBOLS

Red symbols indicate internal characteristics.
Green symbols indicate external characteristics.

COLOR

D E F G H I J Faint Very Light Light

CLARITY

IF	VVS ¹⁻²	VS ¹⁻²	SI ¹⁻²	I ¹⁻³
Internally Flawless	Very Very Slightly Included	Very Slightly Included	Slightly Included	Included



© IGI 2020, International Gemological Institute

FD - 10 20

www.igi.org

DIAMOND REPORT



April 30, 2024

IGI Report Number **LG632476743**Description **LABORATORY GROWN DIAMOND**Shape and Cutting Style **ROUND BRILLIANT**

Measurements 10.40 - 10.45 X 6.26 MM

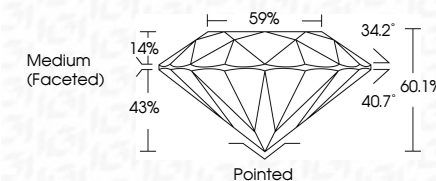
GRADING RESULTS

Carat Weight **4.16 CARATS**

Color Grade **G**

Clarity Grade VS 1

Cut Grade **IDEAL**



ADDITIONAL GRADING INFORMATION

Polish **EXCELLENT**Symmetry **EXCELLENT**Fluorescence **NONE**Inscription(s) **13** LG632476743

Comments: This Laboratory Grown Diamond was created by Chemical Vapor Deposition (CVD) growth process and may include post-growth treatment.
Type IIa



April 30, 2024	GL Report No. LG63274743	ROUND BRILLIANT	10.00 - 10.45 X 6.26 MM	4.16 CARATS	G	VS 1	IDPL	60.1%	89%	Medium (Faceted)	Pointed	Excellent	EXCELLENT	NONE	(#) LG63274743	Comments: This stone was identified by Chemical Vapor Deposition (CVD) growth process and may include post-growth treatment.	
					Carat Weight	Color Grade	Clarity Grade	Car Grade	Depth	Table	Girdle	Culet	Polish	Symmetry	Fluorescence	Inscriptions(s)	Type IIA