



ELECTRONIC COPY

LABORATORY GROWN DIAMOND REPORT

May 4, 2024
IGI Report Number LG632444053
Description LABORATORY GROWN DIAMOND
Shape and Cutting Style PRINCESS CUT
Measurements 7.55 X 7.37 X 5.21 MM

GRADING RESULTS

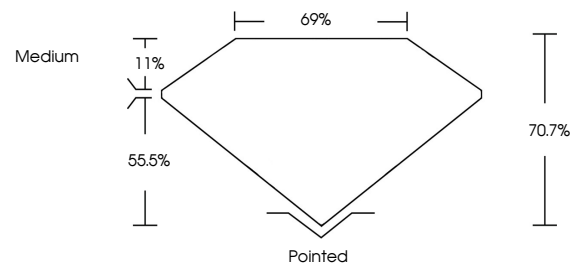
Carat Weight 2.59 CARATS
Color Grade F
Clarity Grade VS 1

ADDITIONAL GRADING INFORMATION

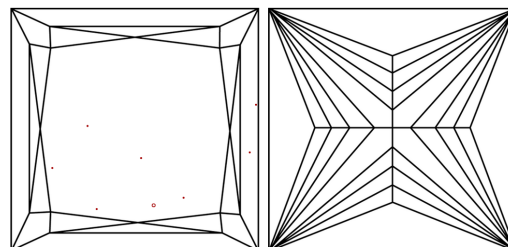
Polish EXCELLENT
Symmetry EXCELLENT
Fluorescence NONE
Inscription(s) IGI LG632444053

Comments: This Laboratory Grown Diamond was created by Chemical Vapor Deposition (CVD) growth process and may include post-growth treatment. Type IIa

PROPORTIONS

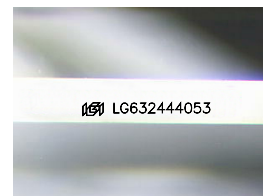


CLARITY CHARACTERISTICS



KEY TO SYMBOLS

Red symbols indicate internal characteristics.
Green symbols indicate external characteristics.



Sample Image Used

COLOR

D E F G H I J Faint Very Light Light

CLARITY

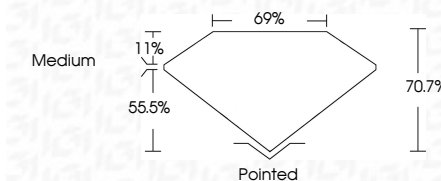
IF VS 1-2 VS 1-2 SI 1-2 I 1-3
Internally Flawless Very Very Slightly Included Very Slightly Included Slightly Included Included



May 4, 2024
IGI Report Number LG632444053
Description LABORATORY GROWN DIAMOND
Shape and Cutting Style PRINCESS CUT
Measurements 7.55 X 7.37 X 5.21 MM

GRADING RESULTS

Carat Weight 2.59 CARATS
Color Grade F
Clarity Grade VS 1



ADDITIONAL GRADING INFORMATION

Polish EXCELLENT
Symmetry EXCELLENT
Fluorescence NONE
Inscription(s) IGI LG632444053

Comments: This Laboratory Grown Diamond was created by Chemical Vapor Deposition (CVD) growth process and may include post-growth treatment. Type IIa



IGI



May 4, 2024
IGI Report No. LG632444053
PRINCESS CUT
2.59 CARATS F
7.55 X 7.37 X 5.21 MM
Carat Weight VS 1
Color Grade 70.7%
Clarity Grade 69%
Depth Medium
Table Pointed
Girdle EXCELLENT
Culet EXCELLENT
Polish NONE
Symmetry NONE
Fluorescence
Inscription(s) IGI LG632444053

Comments: This Laboratory Grown Diamond was created by Chemical Vapor Deposition (CVD) growth process and may include post-growth treatment. Type IIa