

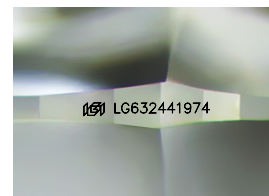
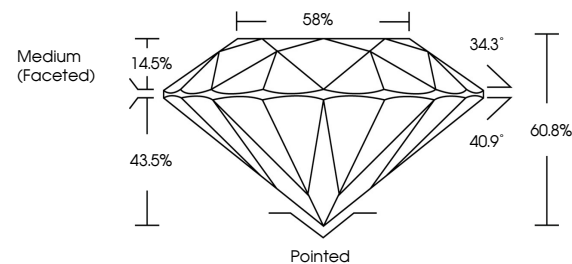


ELECTRONIC COPY

LABORATORY GROWN DIAMOND REPORT

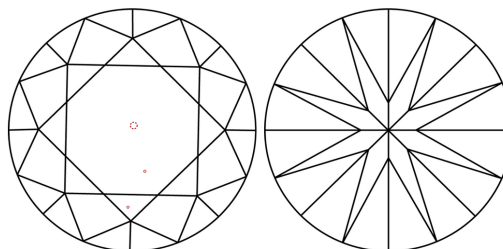
LG632441974
Report verification at igi.org

PROPORTIONS



Sample Image Used

CLARITY CHARACTERISTICS



KEY TO SYMBOLS

Red symbols indicate internal characteristics.
Green symbols indicate external characteristics.

COLOR

D E F G H I J Faint Very Light Light

CLARITY

IF	VVS ^{1,2}	VS ^{1,2}	SI ^{1,2}	I ^{1,3}
Internally Flawless	Very Very Slightly Included	Very Slightly Included	Slightly Included	Included



© IGI 2020, International Gemological Institute

FD - 10 20

www.igi.org

DIAMOND REPORT



May 4, 2024

IGI Report Number **LG632441974**Description **LABORATORY GROWN DIAMOND**Shape and Cutting Style **ROUND BRILLIANT**

Measurements 9.19 - 9.25 X 5.60 MM

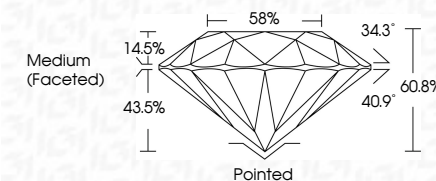
GRADING RESULTS

Carat Weight **2.90 CARATS**

Color Grade H

Clarity Grade VS 1

Cut Grade **IDEAL**



ADDITIONAL GRADING INFORMATION

Polish **EXCELLENT**Symmetry **EXCELLENT**Fluorescence **NONE**Inscription(s) LG632441974

Comments: This Laboratory Grown Diamond was created by Chemical Vapor Deposition (CVD) growth process and may include post-growth treatment.
Type IIa



May 4, 2024	Report No. LG63941974	2.20 CARATS	H
ROUND BRILLIANT	Color Grade	VS 1	IDEAL
VS 19 - 0.25 X 5.60 MM	Clarity Grade	60.6%	58%
	Cut Grade	Medium Faceted	
	Culet	Patched	
	Polish	EXCELLENT	
	Symmetry	EXCELLENT	
	Fluorescence	NONE	
	Inscriptions(s)	#691 LG63941974	

Comments:
This Laboratory Grown Diamond was produced using a Chemical Vapor Deposition (CVD) growth process and may include post-growth treatment.
Type IIA