

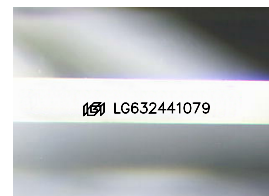
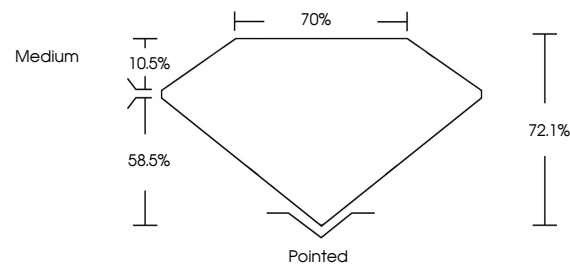


ELECTRONIC COPY

LABORATORY GROWN DIAMOND REPORT

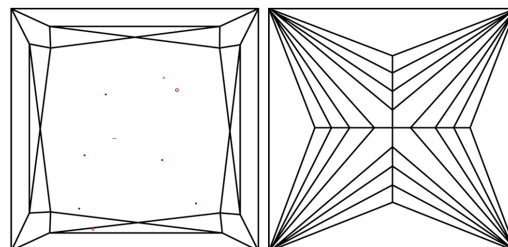
LG632441079
Report verification at igi.org

PROPORTIONS



Sample Image Used

CLARITY CHARACTERISTICS



KEY TO SYMBOLS

Red symbols indicate internal characteristics.
Green symbols indicate external characteristics.

COLOR

D E F G H I J Faint Very Light Light

CLARITY

IF	VVS ¹⁻²	VS ¹⁻²	SI ¹⁻²	I ¹⁻³
Internally Flawless	Very Very Slightly Included	Very Slightly Included	Slightly Included	Included



© IGI 2020, International Gemological Institute

FD - 10 20

www.igi.org

DIAMOND REPORT



May 4, 2024

IGI Report Number **LG632441079**

Description	LABORATORY GROWN DIAMOND
-------------	--------------------------

Shape and Cutting Style **PRINCESS CUT**

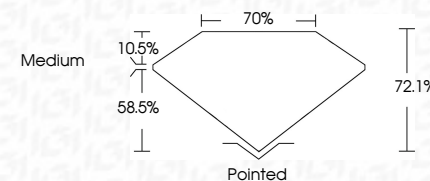
Measurements **7.25 X 7.21 X 5.20 MM**

GRADING RESULTS

Carat Weight **2.32 CARATS**

Color Grade **G**

Clarity Grade VS 1



ADDITIONAL GRADING INFORMATION

Polish **EXCELLENT**Symmetry **EXCELLENT**Fluorescence **NONE**Inscription(s) LG632441079

Comments: This Laboratory Grown Diamond was created by Chemical Vapor Deposition (CVD) growth process and may include post-growth treatment.
Type IIa



IG

May 4, 2024
 IGI Report No LG632441079
 PRINCESS CIT

2.32 CARATS	VS 1	Pointed
72.1%	70%	EXCELLENT
Medium		EXCELLENT
		NONE
		4411 G505441070

Comments:
This Laboratory Grown Diamond was created by Chemical Vapor Deposition (CVD) growth process and may include post-growth treatment.