



ELECTRONIC COPY

LABORATORY GROWN DIAMOND REPORT

May 2, 2024	
IGI Report Number	LG632423617
Description	LABORATORY GROWN DIAMOND
Shape and Cutting Style	ROUND BRILLIANT
Measurements	9.17 - 9.25 X 5.78 MM

GRADING RESULTS

Carat Weight	3.06 CARATS
Color Grade	H
Clarity Grade	VS 1
Cut Grade	EXCELLENT

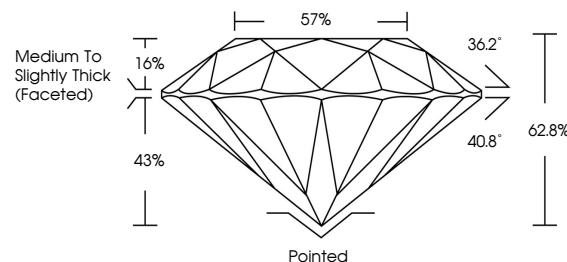
ADDITIONAL GRADING INFORMATION

Polish	EXCELLENT
Symmetry	EXCELLENT
Fluorescence	NONE
Inscription(s)	15 LG632423617

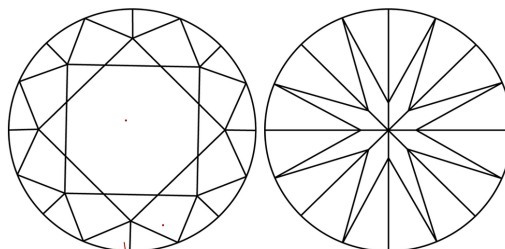
Comments: This Laboratory Grown Diamond was created by Chemical Vapor Deposition (CVD) growth process and may include post-growth treatment.
Type IIa

LG632423617
Report verification at lgi.org

PROPORTIONS

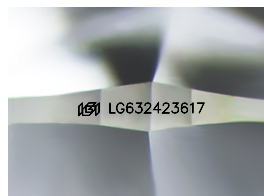


CLARITY CHARACTERISTICS



KEY TO SYMBOLS

Red symbols indicate internal characteristics.
Green symbols indicate external characteristics.



Sample Image Used

COLOR

D E F G H I J Faint Very Light Light

CLARITY

IF	WVS ¹⁻²	VS ¹⁻²	SI ¹⁻²	I ¹⁻³
Internally Flawless	Very Very Slightly Included	Very Slightly Included	Slightly Included	Included



© IGI 2020, International Gemological Institute

FD - 10 20

www.igi.org

DIAMOND REPORT



May 2, 2024

IGI Report Number LG632423617

Description **LABORATORY GROWN DIAMOND**Shape and Cutting Style **ROUND BRILLIANT**

Measurements 9.17 - 9.25 X 5.78 MM

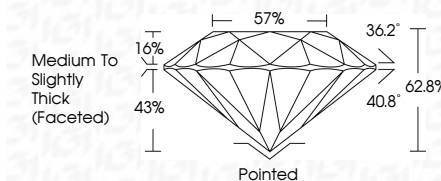
GRADING RESULTS

Carat Weight 3.06 CARATS

Color Grade H

Clarity Grade VS 1

Cut Grade **EXCELLENT**



ADDITIONAL GRADING INFORMATION

Polish **EXCELLENT**Symmetry **EXCELLENT**Fluorescence **NONE**Inscription(s) LG632423617

Comments: This Laboratory Grown Diamond was created by Chemical Vapor Deposition (CVD) growth process and may include post-growth treatment.
Type IIa



May 2, 2024	GI Report No LG592263617	3.06 CARATS	VSI 1	Polished
ROUND BRILLIANT		Color Grade	EXCELLENT	EXCELLENT
	Carat Weight	Clarity Grade	62.8%	EXCELLENT
	17.17 - 5.25 X 5.78 MM	Cut Grade	57%	NONE
		Depth	Medium to slightly Thick Faceted	689 LG592263617
		Table		
		Girdle		
		Culet		
		Polish		
		Symmetry		
		Fluorescence		
		Inscriptions(s)		

Comments:
This Laboratory Grown Diamond was created by Chemical Vapor Deposition (CVD) growth process and may include some growth treatment.