

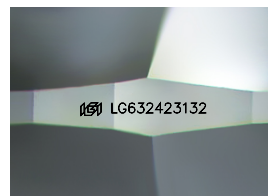
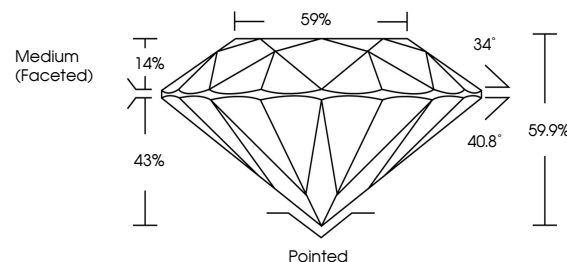


ELECTRONIC COPY

LABORATORY GROWN DIAMOND REPORT

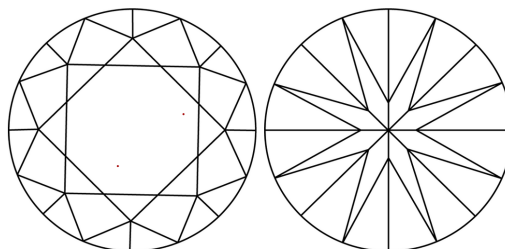
LG632423132
Report verification at lgi.org

PROPORTIONS



Sample Image Used

CLARITY CHARACTERISTICS



KEY TO SYMBOLS

Red symbols indicate internal characteristics.
Green symbols indicate external characteristics.

COLOR

D E F G H I J Faint Very Light Light

CLARITY

IF	VVS ¹⁻²	VS ¹⁻²	SI ¹⁻²	I ¹⁻³
Internally Flawless	Very Very Slightly Included	Very Slightly Included	Slightly Included	Included



© IGI 2020, International Gemological Institute

FD - 10 20

DIAMOND REPORT



May 3, 2024

IGI Report Number **LG632423132**Description **LABORATORY GROWN DIAMOND**Shape and Cutting Style **ROUND BRILLIANT**

Measurements 10.84 - 10.87 X 6.50 MM

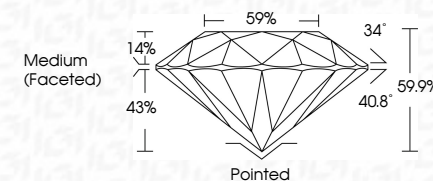
GRADING RESULTS

Carat Weight **4.67 CARATS**

Color Grade H

Clarity Grade WS 2

Cut Grade **IDEAL**



ADDITIONAL GRADING INFORMATION

Polish **EXCELLENT**Symmetry **EXCELLENT**Fluorescence **NONE**Inscription(s) LG632423132

Comments: This Laboratory Grown Diamond was created by Chemical Vapor Deposition (CVD) growth process and may include post-growth treatment.
Type IIa



May 3, 2024	Report No. LG53/223132	10.64 - 10.87 X 4.50 MM	Carat Weight	4.67 CARATS	
GI Report No. LG53/223132			Color Grade	H	
			Clarity Grade	VVS 2	
			Cut Grade	IDEAL	
			Depth	59.9%	
			Table	59%	
			Grinde	Medium (Faceted)	
			Color	Pointed	
			Polish	EXCELLENT	
			Symmetry	EXCELLENT	
			Fluorescence	NONE	
			Inscription(s)	689 LG53/223132	
			Comments:	This Laboratory Grown Diamond was created by Chemical Vapor Deposition (CVD) growth process and may include trace amounts of boron treatment. Type Ila.	