



ELECTRONIC COPY

LABORATORY GROWN DIAMOND REPORT

April 27, 2024	
IGI Report Number	LG631472376
Description	LABORATORY GROWN DIAMOND
Shape and Cutting Style	ROUND BRILLIANT
Measurements	8.99 - 9.03 X 5.61 MM

GRADING RESULTS

Carat Weight	2.82 CARATS
Color Grade	G
Clarity Grade	VS 2
Cut Grade	IDEAL

ADDITIONAL GRADING INFORMATION

Polish	EXCELLENT
Symmetry	EXCELLENT
Fluorescence	NONE
Inscription(s)	 LG631472376

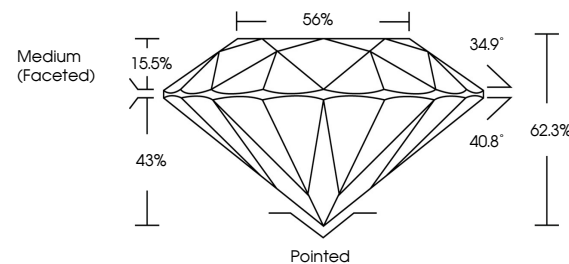
Comments: This Laboratory Grown Diamond was created by Chemical Vapor Deposition (CVD) growth process and may include post-growth treatment.
Type IIa

LABORATORY GROWN DIAMOND REPORT

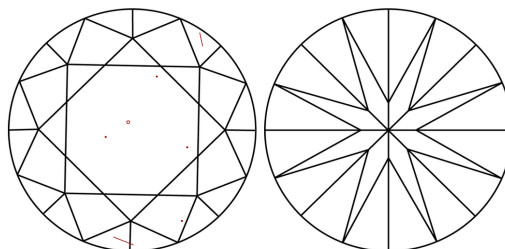
LG631472376

Report verification at igi.org

PROPORTIONS



CLARITY CHARACTERISTICS



KEY TO SYMBOLS

Red symbols indicate internal characteristics.
Green symbols indicate external characteristics.

LABORATORY GROWN
DIAMOND REPORT

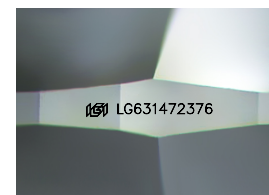
GRADING SCALES

CLARITY

IF	VVS ¹⁻²	VS ¹⁻²	SI ¹⁻²	I ¹⁻³
Internally Flawless	Very Very Slightly Included	Very Slightly Included	Slightly Included	Included

COLOR

D E F G H I J Faint Very Light Light



Sample Image Used



© IGI 2020, International Gemological Institute

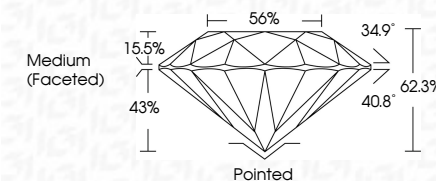
FD - 10 20

www.igi.org

LABORATORY GROWN DIAMOND REPORT

April 27, 2024	
IGI Report Number	LG631472376
Description	LABORATORY GROWN DIAMOND
Shape and Cutting Style	ROUND BRILLIANT
Measurements	8.99 - 9.03 X 5.61 MM

GRADING RESULTS	
Carat Weight	2.82 CARATS
Color Grade	G
Clarity Grade	VS 2
Cut Grade	IDEAL



ADDITIONAL GRADING INFORMATION

Polish	EXCELLENT
Symmetry	EXCELLENT
Fluorescence	NONE
Inscription(s)	(15) LG631472376

Comments: This Laboratory Grown Diamond was created by Chemical Vapor Deposition (CVD) growth process and may include post-growth treatment.
Type IIa



April 27, 2024	Carat Weight	2.82 CARATS
G Report No. LG33/472376	Color Grade	G
ROUND BRILLIANT	Clarity Grade	VS 2
	Cut Grade	IDEAL
	Depth	62.3%
	Table	62.3%
	Girdle	56%
		Medium (Faceted)
	Culet	Pointed
	Polish	EXCELLENT
	Symmetry	EXCELLENT
	Fluorescence	NONE
	Inscriptions(s)	689 LG33/472376
	Comments:	The Laboratory Grown Diamond was created by Chemical Vapor Deposition (CVD) growth process and may include post-growth treatment.
		type Ia