



ELECTRONIC COPY

LABORATORY GROWN DIAMOND REPORT

April 26, 2024	
IGI Report Number	LG631454818
Description	LABORATORY GROWN DIAMOND
Shape and Cutting Style	ROUND BRILLIANT
Measurements	9.17 - 9.21 X 5.60 MM

GRADING RESULTS

Carat Weight	2.90 CARATS
Color Grade	H
Clarity Grade	VS 1
Cut Grade	IDEAL

ADDITIONAL GRADING INFORMATION

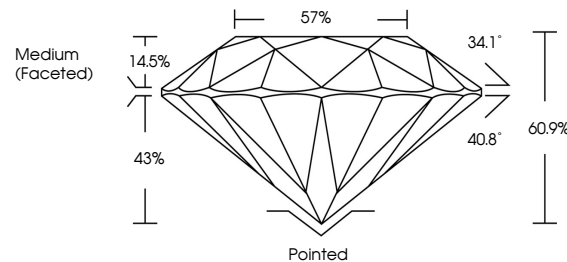
Polish	EXCELLENT
Symmetry	EXCELLENT
Fluorescence	NONE
Inscription(s)	15 LG631454818

Comments: This Laboratory Grown Diamond was created by Chemical Vapor Deposition (CVD) growth process and may include post-growth treatment.
Type IIa

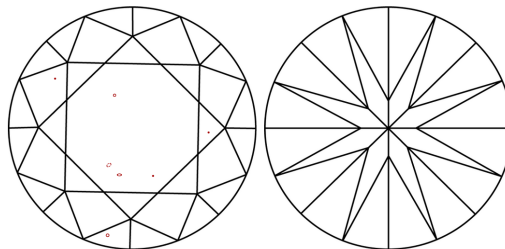
LABORATORY GROWN DIAMOND REPORT

LG631454818
Report verification at igi.org

PROPORTIONS



CLARITY CHARACTERISTICS



KEY TO SYMBOLS

Red symbols indicate internal characteristics.
Green symbols indicate external characteristics.

LABORATORY GROWN
DIAMOND REPORT

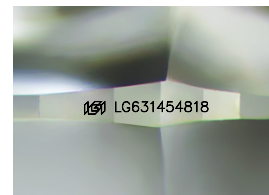
GRADING SCALES

CLARITY

IF	VVS ¹⁻²	VS ¹⁻²	SI ¹⁻²	I ¹⁻³
Internally Flawless	Very Very Slightly Included	Very Slightly Included	Slightly Included	Included

COLOR

D E F G H I J Faint Very Light Light



Sample Image Used



© IGI 2020, International Gemological Institute

FD - 10 20

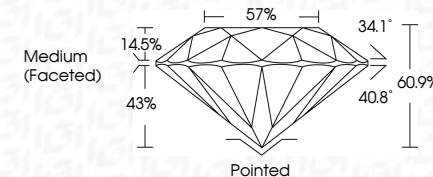
www.igi.org

LABORATORY GROWN DIAMOND REPORT

April 26, 2024	
IGI Report Number	LG631454818
Description	LABORATORY GROWN DIAMOND
Shape and Cutting Style	ROUND BRILLIANT
Measurements	9.17 - 9.21 X 5.60 MM

GRADING RESULTS

Carat Weight	2.90 CARATS
Color Grade	H
Clarity Grade	VS 1
Cut Grade	IDEAL



ADDITIONAL GRADING INFORMATION

Polish	EXCELLENT
Symmetry	EXCELLENT
Fluorescence	NONE
Inscription(s)	 LG631454818

Comments: This Laboratory Grown Diamond was created by Chemical Vapor Deposition (CVD) growth process and may include post-growth treatment.
Type IIa



April 26, 2024	2.90 CARATS	VS 1	Pointed	Comments: This Laboratory Grown Diamond was created by Chemical Vapor Deposition (CVD) growth process and may include post-growth treatment.
G1 Report No.IG033454818	H	IDEAL	EXCELLENT	
ROUND BRILLIANT	2.90 CARATS	60.9%	EXCELLENT	
		57%	NONE	
		Medium (faceted)	(gsm) 15631454818	
	Card Weight	17 - 21 X 5.60 MM	Culet	
	Color Grade	Color Grade	Polish	
		Clarity Grade	Symmetry	
		Color Grade	Fluorescence	
		Depth	Inscriptions(s)	
		Table		
		Girdle		