

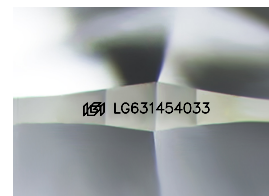
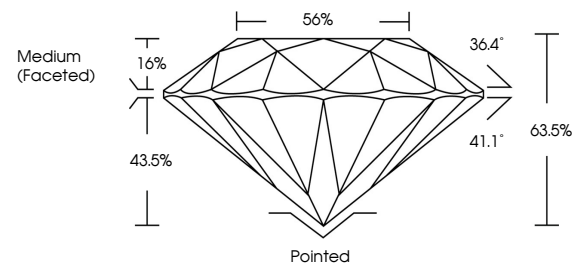


ELECTRONIC COPY

LABORATORY GROWN DIAMOND REPORT

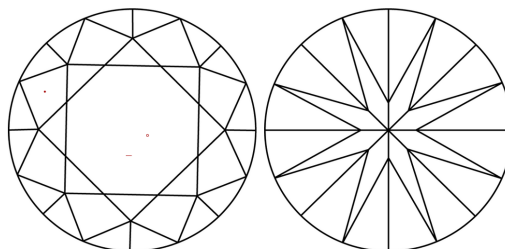
LG631454033
Report verification at igi.org

PROPORTIONS



Sample Image Used

CLARITY CHARACTERISTICS



KEY TO SYMBOLS

Red symbols indicate internal characteristics.
Green symbols indicate external characteristics.

COLOR

D E F G H I J Faint Very Light Light

CLARITY

IF	VVS ¹⁻²	VS ¹⁻²	SI ¹⁻²	I ¹⁻³
Internally Flawless	Very Very Slightly Included	Very Slightly Included	Slightly Included	Included



© IGI 2020, International Gemological Institute

FD - 10 20

www.igi.org

DIAMOND REPORT



April 27, 2024

IGI Report Number **LG631454033**Description **LABORATORY GROWN DIAMOND**Shape and Cutting Style **ROUND BRILLIANT**

Measurements 9.16 - 9.22 X 5.84 MM

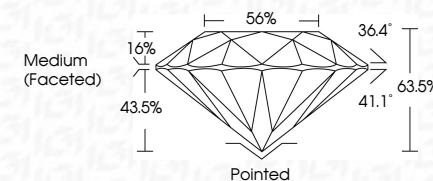
GRADING RESULTS

Carat Weight **3.07 CARATS**

Color Grade H

Clarity Grade VS 1

Cut Grade **EXCELLENT**



ADDITIONAL GRADING INFORMATION

Polish EXCELLENT

Symmetry **EXCELLENT**Fluorescence **NONE**Inscription(s) LG631454033

Comments: This Laboratory Grown Diamond was created by Chemical Vapor Deposition (CVD) growth process and may include post-growth treatment.
Type IIa



April 27, 2024
GI Report No LG631454033
ROUND BRILLIANT

3.16 - 9.22 X 5.84 MM	3.07 CARATS
Carat Weight	H
Color Grade	VS 1
Clarity Grade	EXCELLENT
Out Grade	83.5%
Depth	56%
Table	Medium (Excellent)
Girdle	

	Pointed	EXCELLENT	EXCELLENT	NONE
Culet				
Polish				
Symmetry				
Fluorescence				

Comments:
This Laboratory Grown Diamond was created by Chemical Vapor Deposition (CVD) growth process and may include post-growth treatment.