



ELECTRONIC COPY

LABORATORY GROWN DIAMOND REPORT

April 23, 2024	
IGI Report Number	LG631415646
Description	LABORATORY GROWN DIAMOND
Shape and Cutting Style	ROUND BRILLIANT
Measurements	10.87 - 10.93 X 6.57 MM

GRADING RESULTS

Carat Weight	4.77 CARATS
Color Grade	H
Clarity Grade	VVS 2
Cut Grade	IDEAL

ADDITIONAL GRADING INFORMATION

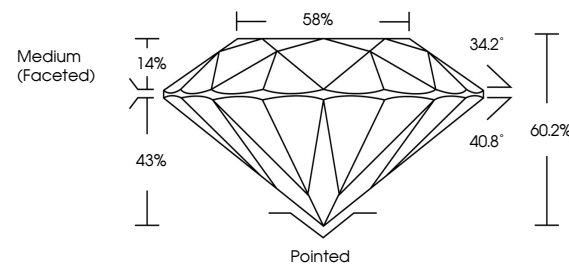
Polish	EXCELLENT
Symmetry	EXCELLENT
Fluorescence	NONE
Inscription(s)	 LG631415646

Comments: This Laboratory Grown Diamond was created by Chemical Vapor Deposition (CVD) growth process and may include post-growth treatment.
Type IIa

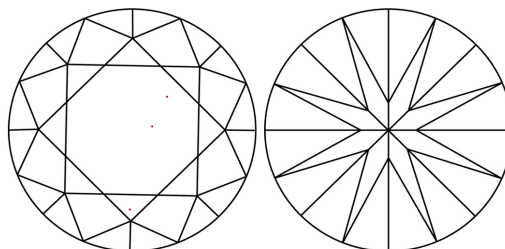
LABORATORY GROWN DIAMOND REPORT

LG631415646
Report verification at igi.org

PROPORTIONS



CLARITY CHARACTERISTICS



KEY TO SYMBOLS

Red symbols indicate internal characteristics.
Green symbols indicate external characteristics.

LABORATORY GROWN
DIAMOND REPORT

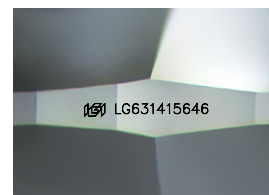
GRADING SCALES

CLARITY

IF	VVS ¹⁻²	VS ¹⁻²	SI ¹⁻²	I ¹⁻³
Internally Flawless	Very Very Slightly Included	Very Slightly Included	Slightly Included	Included

COLOR

D E F G H I J Faint Very Light Light



Sample Image Used



© IGI 2020, International Gemological Institute

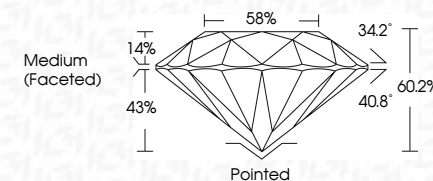
FD - 10 20

LABORATORY GROWN DIAMOND REPORT

April 23, 2024	
IGI Report Number	LG631415646
Description	LABORATORY GROWN DIAMOND
Shape and Cutting Style	ROUND BRILLIANT
Measurements	10.87 - 10.93 X 6.57 MM

GRADING RESULTS

Carat Weight	4.77 CARATS
Color Grade	H
Clarity Grade	VVS 2
Cut Grade	IDEAL



ADDITIONAL GRADING INFORMATION

Polish	EXCELLENT
Symmetry	EXCELLENT
Fluorescence	NONE
Inscription(s)	 LG631415646

Comments: This Laboratory Grown Diamond was created by Chemical Vapor Deposition (CVD) growth process and may include post-growth treatment.
Type IIa



April 23, 2024	G Report No. LG431415446	ROUND BRILLIANT	10.97 - 10.93 X 6.57 MM	Color Weight	4.77 CARATS	H	VVS 2	IDEAL	60.2%	58%	Medium (Faceted)	Pointed	Excellent	Excellent	NONE	#69 LG431415446	Comments: The Laboratory Grown Diamond was created by Chemical Vapor Deposition (CVD) growth process and may include post-growth treatment.
				Color Grade			Clarity Grade					Culet	Polish	Symmetry	Fluorescence Description(s)		type Ia
				Cur Grade			Cur Grade					Table	Girdle				

www.igi.org