

**ELECTRONIC COPY**

## LABORATORY GROWN DIAMOND REPORT

April 22, 2024	
IGI Report Number	LG631405510
Description	LABORATORY GROWN DIAMOND
Shape and Cutting Style	ROUND BRILLIANT
Measurements	9.15 - 9.24 X 5.67 MM

## GRADING RESULTS

Carat Weight	2.96 CARATS
Color Grade	F
Clarity Grade	VS 1
Cut Grade	IDEAL

### ADDITIONAL GRADING INFORMATION

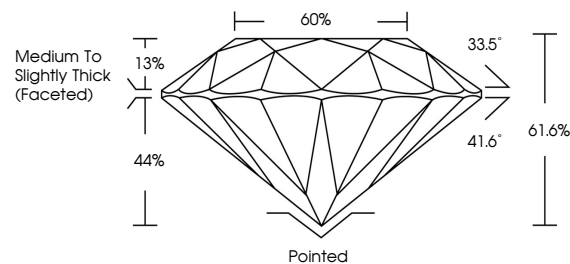
Polish	EXCELLENT
Symmetry	EXCELLENT
Fluorescence	NONE
Inscription(s)	LG631405510

Comments: This Laboratory Grown Diamond was created by Chemical Vapor Deposition (CVD) growth process and may include post-growth treatment.  
Type IIa

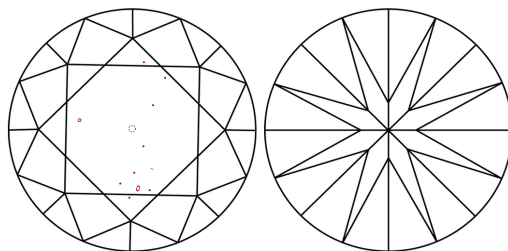
## LABORATORY GROWN DIAMOND REPORT

LG631405510  
Report verification at [igi.org](https://igi.org)

## PROPORTIONS



## CLARITY CHARACTERISTICS



## KEY TO SYMBOLS

Red symbols indicate internal characteristics.  
Green symbols indicate external characteristics.

LABORATORY GROWN  
DIAMOND REPORT

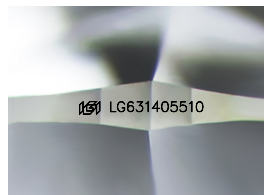
## GRADING SCALES

## CLARITY

IF	VVS <sup>1-2</sup>	VS <sup>1-2</sup>	SI <sup>1-2</sup>	I <sup>1-3</sup>
Internally Flawless	Very Very Slightly Included	Very Slightly Included	Slightly Included	Included

**COLOR**

D E F G H I J Faint Very Light Light



Sample Image Used



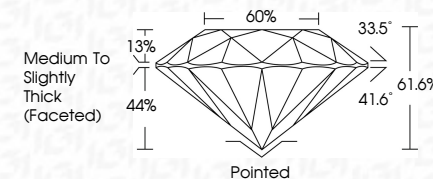
© IGI 2020, International Gemological Institute

FD - 10 20


## LABORATORY GROWN DIAMOND REPORT

April 22, 2024	
IGI Report Number	LG631405510
Description	LABORATORY GROWN DIAMOND
Shape and Cutting Style	ROUND BRILLIANT
Measurements	9.15 - 9.24 X 5.67 MM

GRADING RESULTS	
Carat Weight	2.96 CARATS
Color Grade	F
Clarity Grade	VS 1
Cut Grade	IDEAL



### ADDITIONAL GRADING INFORMATION

Polish	EXCELLENT
Symmetry	EXCELLENT
Fluorescence	NONE
Inscription(s)	 LG631405510
<p>Comments: This Laboratory Grown Diamond was created by Chemical Vapor Deposition (CVD) growth process and may include post-growth treatment.</p> <p>Type IIa</p>	



April 22, 2024	GI report No. LG531 403510	2% CARATS	Vs 1	Pointed	Comments: Grown Diamond was created by Chemical Vapor Deposition (CVD) growth process and may include post-growth treatment.
ROUND BRILLIANT	18 - 24 X 5.67 MM	F	IDEAL	EXCELLENT	
Color Grade	Color Grade	61.6%	Medium to Slightly	NONE	
Clarity Grade	Clarity Grade	60%	Med (Faceted)	#6 LG531 403510	
Depth	Cur Grade				
Table	Table			Symmetry	
Grille	Grille			Fluorescence	
				Inscription(s)	
				Quiet	
				Polish	