



ELECTRONIC COPY

LABORATORY GROWN DIAMOND REPORT

April 19, 2024	
IGI Report Number	LG630444050
Description	LABORATORY GROWN DIAMOND
Shape and Cutting Style	ROUND BRILLIANT
Measurements	10.08 - 10.13 X 6.19 MM

GRADING RESULTS

Carat Weight	3.91 CARATS
Color Grade	G
Clarity Grade	VS 1
Cut Grade	IDEAL

ADDITIONAL GRADING INFORMATION

Polish	EXCELLENT
Symmetry	EXCELLENT
Fluorescence	NONE
Inscription(s)	 LG630444050

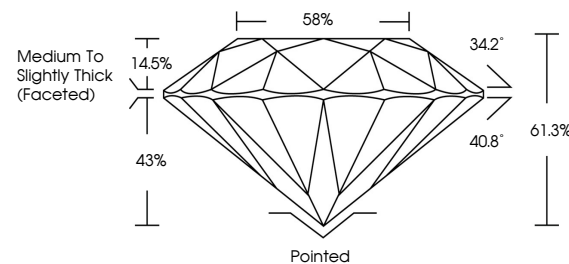
Comments: This Laboratory Grown Diamond was created by Chemical Vapor Deposition (CVD) growth process and may include post-growth treatment.
Type IIa

LABORATORY GROWN DIAMOND REPORT

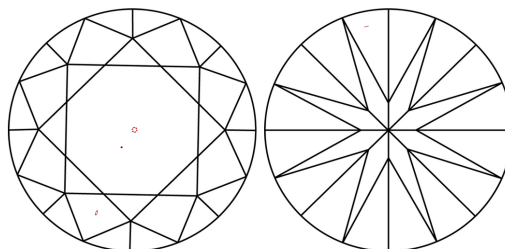
LG630444050

Report verification at igi.org

PROPORTIONS



CLARITY CHARACTERISTICS



KEY TO SYMBOLS

Red symbols indicate internal characteristics.
Green symbols indicate external characteristics.

LABORATORY GROWN
DIAMOND REPORT

GRADING SCALES

CLARITY

IF	VVS ¹⁻²	VS ¹⁻²	SI ¹⁻²	I ¹⁻³
Internally Flawless	Very Very Slightly Included	Very Slightly Included	Slightly Included	Included

COLOR

D E F G H I J Faint Very Light Light



Sample Image Used



© IGI 2020, International Gemological Institute

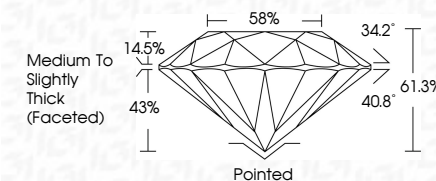
FD - 10 20

www.igi.org

LABORATORY GROWN DIAMOND REPORT

April 19, 2024	
IGI Report Number	LG630444050
Description	LABORATORY GROWN DIAMOND
Shape and Cutting Style	ROUND BRILLIANT
Measurements	10.08 - 10.13 X 6.19 MM

Carat Weight	3.91 CARATS
Color Grade	G
Clarity Grade	VS 1
Cut Grade	IDEAL



ADDITIONAL GRADING INFORMATION

Polish	EXCELLENT
Symmetry	EXCELLENT
Fluorescence	NONE
Inscription(s)	(15) LG630444050

Comments: This Laboratory Grown Diamond was created by Chemical Vapor Deposition (CVD) growth process and may include post-growth treatment.
Type IIa



	April 19, 2024					
	GND Refill No LG830444050					
	SOUND BRILLIANT					
	10-08 - 10.13 X 6.19 MM					
Coral Weight		Color Grade	Clarity Grade	Cut Grade	Depth	
			VS 1	IDeAL	61.3%	
					58%	
					Medium to Slightly Thick (Faceted)	
Quel	Patched	Rough	Excellent	EXCELLENT	NONE	
Polish	Symmetry	Fluorescence	Inscription(s)	#G LG830444050		
Comments:						
Created by Crown Diamond usa						
Inspected by Crown Diamond Usa						
(CVD) growth process and may include post-growth treatment.						
Type IIA						