



**ELECTRONIC COPY**

## LABORATORY GROWN DIAMOND REPORT

|                         |                             |
|-------------------------|-----------------------------|
| April 15, 2024          |                             |
| IGI Report Number       | LG629474692                 |
| Description             | LABORATORY GROWN<br>DIAMOND |
| Shape and Cutting Style | ROUND BRILLIANT             |
| Measurements            | 9.15 - 9.22 X 5.81 MM       |

## GRADING RESULTS

|               |             |
|---------------|-------------|
| Carat Weight  | 3.07 CARATS |
| Color Grade   | G           |
| Clarity Grade | VS 1        |
| Cut Grade     | EXCELLENT   |

### ADDITIONAL GRADING INFORMATION

|                |   |
|----------------|---|
| Polish         | EXCELLENT   |
| Symmetry       | EXCELLENT   |
| Fluorescence   | NONE  |
| Inscription(s) |  LG629474692 |

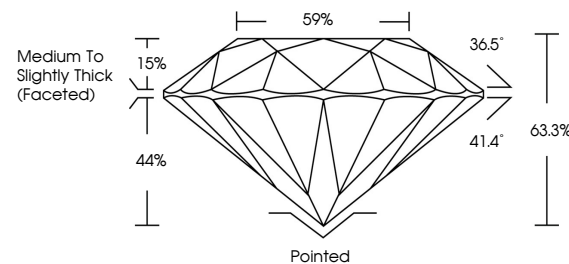
Comments: This Laboratory Grown Diamond was created by Chemical Vapor Deposition (CVD) growth process and may include post-growth treatment.  
Type IIa

## LABORATORY GROWN DIAMOND REPORT

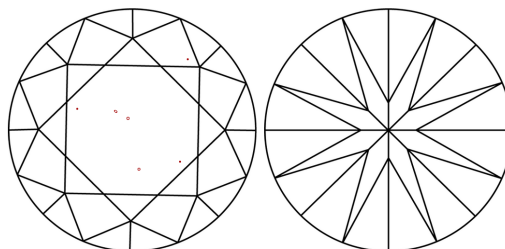
LG629474692

Report verification at [igi.org](http://igi.org)

## PROPORTIONS



## CLARITY CHARACTERISTICS



## KEY TO SYMBOLS

Red symbols indicate internal characteristics.  
Green symbols indicate external characteristics.

LABORATORY GROWN  
DIAMOND REPORT

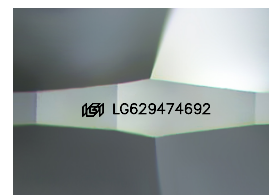
## GRADING SCALES

## CLARITY

| IF                  | VVS <sup>1-2</sup>          | VS <sup>1-2</sup>      | SI <sup>1-2</sup> | I <sup>1-3</sup> |
|---------------------|-----------------------------|------------------------|-------------------|------------------|
| Internally Flawless | Very Very Slightly Included | Very Slightly Included | Slightly Included | Included         |

**COLOR**

D E F G H I J Faint Very Light Light



Sample Image Used



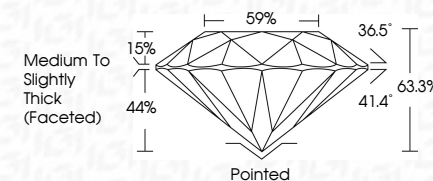
© IGI 2020, International Gemological Institute

FD - 10 20

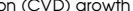
**www.igi.org**

## LABORATORY GROWN DIAMOND REPORT

|                         |                             |
|-------------------------|-----------------------------|
| April 15, 2024          |                             |
| IGI Report Number       | LG629474692                 |
| Description             | LABORATORY GROWN<br>DIAMOND |
| Shape and Cutting Style | ROUND BRILLIANT             |
| Measurements            | 9.15 - 9.22 X 5.81 MM       |
| <b>GRADING RESULTS</b>  |                             |
| Carat Weight            | 3.07 CARATS                 |
| Color Grade             | G                           |
| Clarity Grade           | VS 1                        |
| Cut Grade               | EXCELLENT                   |



### ADDITIONAL GRADING INFORMATION

|   |  |
|---|--|
| Polish  | EXCELLENT  |
| Symmetry  | EXCELLENT  |
| Fluorescence  | NONE   |
| Inscription(s)  |  LG629474692 |
| <p>Comments: This Laboratory Grown Diamond was created by Chemical Vapor Deposition (CVD) growth process and may include post-growth treatment.</p> <p>Type IIa</p> |  |



April 15, 2024  
GI Report No LG629474692  
ROUND BRILLIANT

|                        |               |                                    |
|------------------------|---------------|------------------------------------|
| 12.15 - 9.22 X 5.81 MM | Carat Weight  | 3.07 CARATS                        |
|                        | Color Grade   | G                                  |
|                        | Clarity Grade | VS 1                               |
|                        | Cut Grade     | EXCELLENT                          |
|                        | Depth         | 63.9%                              |
|                        | Table         | 59%                                |
|                        | Grade         | Medium to Slightly Thick (Faceted) |
|                        | Culet         | Pointed                            |
|                        | Polish        | EXCELLENT                          |
|                        | Symmetry      | EXCELLENT                          |
|                        | Fluorescence  | NONE                               |
|                        | Reference(s)  | gem 12/20/01 14692                 |

**Comments:**  
This Laboratory Grown Diamond was created by Chemical Vapor Deposition (CVD) growth process and may include post-growth treatment.