



ELECTRONIC COPY

LABORATORY GROWN DIAMOND REPORT

LG628439149

Report verification at igi.org

LABORATORY GROWN
DIAMOND REPORT

LABORATORY GROWN DIAMOND REPORT

LABORATORY GROWN DIAMOND REPORT

April 3, 2024
IGI Report Number **LG628439149**
Description **LABORATORY GROWN
DIAMOND**
Shape and Cutting Style **PRINCESS CUT**
Measurements **6.80 X 6.74 X 4.93 MM**

GRADING RESULTS

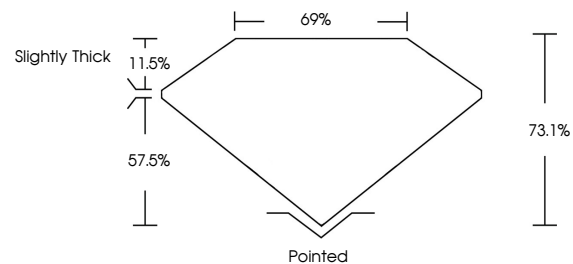
Carat Weight **1.98 CARAT**
Color Grade **G**
Clarity Grade **VS 1**

ADDITIONAL GRADING INFORMATION

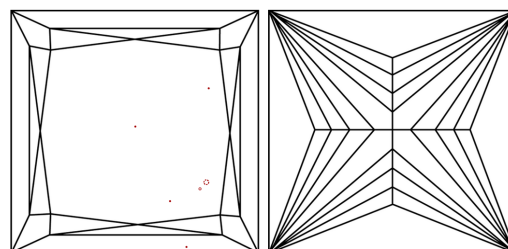
Polish **EXCELLENT**
Symmetry **EXCELLENT**
Fluorescence **NONE**
Inscription(s) **IGI LG628439149**

Comments: This Laboratory Grown Diamond was created by Chemical Vapor Deposition (CVD) growth process and may include post-growth treatment. Type IIa

PROPORTIONS



CLARITY CHARACTERISTICS



KEY TO SYMBOLS

Red symbols indicate internal characteristics.
Green symbols indicate external characteristics.

GRADING SCALES

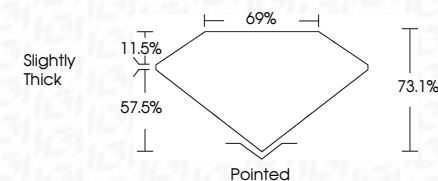
CLARITY

IF	VVS ¹⁻²	VS ¹⁻²	SI ¹⁻²	I ¹⁻³
Internally Flawless	Very Very Slightly Included	Very Slightly Included	Slightly Included	Included

COLOR

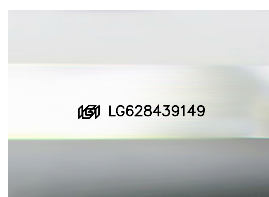
D	E	F	G	H	I	J	Faint	Very Light	Light
---	---	---	---	---	---	---	-------	------------	-------

April 3, 2024
IGI Report Number **LG628439149**
Description **LABORATORY GROWN
DIAMOND**
Shape and Cutting Style **PRINCESS CUT**
Measurements **6.80 X 6.74 X 4.93 MM**
GRADING RESULTS
Carat Weight **1.98 CARAT**
Color Grade **G**
Clarity Grade **VS 1**



ADDITIONAL GRADING INFORMATION

Polish **EXCELLENT**
Symmetry **EXCELLENT**
Fluorescence **NONE**
Inscription(s) **IGI LG628439149**
Comments: This Laboratory Grown Diamond was created by Chemical Vapor Deposition (CVD) growth process and may include post-growth treatment. Type IIa



Sample Image Used



IGI

April 3, 2024
IGI Report No. **LG628439149**
PRINCESS CUT
6.80 X 6.74 X 4.93 MM
Carat Weight **1.98 CARAT**
Color Grade **G**
Clarity Grade **VS 1**
Depth **73.1%**
Table **69%**
Girdle **Slightly Thick**
Culet **Pointed**
Polish **EXCELLENT**
Symmetry **EXCELLENT**
Fluorescence **NONE**
Inscription(s) **IGI LG628439149**

Comments: This Laboratory Grown Diamond was created by Chemical Vapor Deposition (CVD) growth process and may include post-growth treatment. Type IIa