



**ELECTRONIC COPY**

## LABORATORY GROWN DIAMOND REPORT

|                         |                             |
|-------------------------|-----------------------------|
| March 29, 2024          |                             |
| IGI Report Number       | LG627476338                 |
| Description             | LABORATORY GROWN<br>DIAMOND |
| Shape and Cutting Style | ROUND BRILLIANT             |
| Measurements            | 10.30 - 10.35 X 6.22 MM     |

## GRADING RESULTS

|               |             |
|---------------|-------------|
| Carat Weight  | 4.10 CARATS |
| Color Grade   | G           |
| Clarity Grade | VS 1        |
| Cut Grade     | IDEAL       |

### ADDITIONAL GRADING INFORMATION

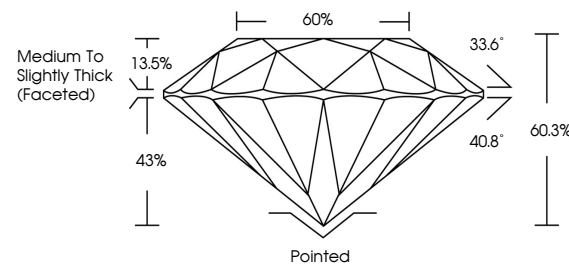
|                |                |
|----------------|----------------|
| Polish         | EXCELLENT      |
| Symmetry       | EXCELLENT      |
| Fluorescence   | NONE           |
| Inscription(s) | 15 LG627476338 |

Comments: This Laboratory Grown Diamond was created by Chemical Vapor Deposition (CVD) growth process and may include post-growth treatment.  
Type IIa

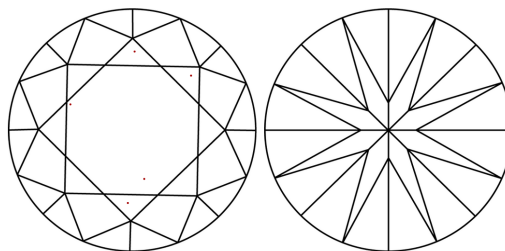
## LABORATORY GROWN DIAMOND REPORT

LG627476338  
Report verification at [igi.org](https://igi.org)

## PROPORTIONS



## CLARITY CHARACTERISTICS



## KEY TO SYMBOLS

Red symbols indicate internal characteristics.  
Green symbols indicate external characteristics.

LABORATORY GROWN  
DIAMOND REPORT

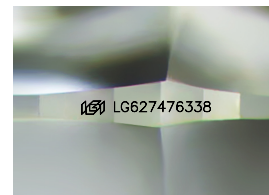
## GRADING SCALES

## CLARITY

| IF                  | VVS <sup>1-2</sup>          | VS <sup>1-2</sup>      | SI <sup>1-2</sup> | I <sup>1-3</sup> |
|---------------------|-----------------------------|------------------------|-------------------|------------------|
| Internally Flawless | Very Very Slightly Included | Very Slightly Included | Slightly Included | Included         |

**COLOR**

D E F G H I J Faint Very Light Light



Sample Image Used



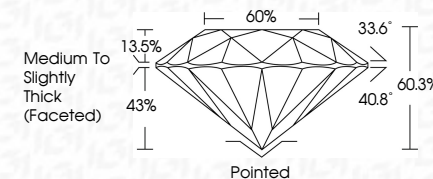
© IGI 2020, International Gemological Institute

FD - 10 20

## LABORATORY GROWN DIAMOND REPORT

|                         |                             |
|-------------------------|-----------------------------|
| March 29, 2024          |                             |
| IGI Report Number       | LG627476338                 |
| Description             | LABORATORY GROWN<br>DIAMOND |
| Shape and Cutting Style | ROUND BRILLIANT             |
| Measurements            | 10.30 - 10.35 X 6.22 MM     |

|               |             |
|---------------|-------------|
| Carat Weight  | 4.10 CARATS |
| Color Grade   | G           |
| Clarity Grade | VS 1        |
| Cut Grade     | IDEAL       |



### ADDITIONAL GRADING INFORMATION

|                |   |
|----------------|---|
| Polish         | EXCELLENT   |
| Symmetry       | EXCELLENT   |
| Fluorescence   | NONE  |
| Inscription(s) |  LG627476338 |

Comments: This Laboratory Grown Diamond was created by Chemical Vapor Deposition (CVD) growth process and may include post-growth treatment.  
Type IIa



|                         |   |  |
|-------------------------|---|--|
| March 29, 2024          | GI Report No. LG527474338   |  |
| <b>SOUND BRILLIANT</b>  |   |  |
| 10.30 - 10.35 & 6.22 MM |   |  |
| Carat Weight            | 4.10 CARATS   |  |
| Color Grade             | G   |  |
| Clarity Grade           | VS 1  |  |
| Cut Grade               | IDEAL   |  |
| Depth                   | 60.5%   |  |
| Table                   | 60%   |  |
| Girdle                  | Medium to Slightly Thick (Faceted)  |  |
| Culet                   | Pointed   |  |
| Polish                  | EXCELLENT   |  |
| Symmetry                | EXCELLENT   |  |
| Fluorescence            | NONE  |  |
| Inscription(s)          | 169 LG527474338   |  |
| Comments:               |   |  |
|                         | <p>Reported by Crown Diamond via email, this diamond was created by Chemical Vapor Deposition (CVD) growth process and may include post-growth treatment.</p> |  |
|                         | Type IIa  |  |