



ELECTRONIC COPY

LABORATORY GROWN DIAMOND REPORT

| | |
|-------------------------|-----------------------------|
| April 1, 2024 | |
| IGI Report Number | LG627405955 |
| Description | LABORATORY GROWN DIAMOND |
| Shape and Cutting Style | PRINCESS CUT |
| Measurements | 7.19 X 7.15 X 5.19 MM |

GRADING RESULTS

| | |
|---------------|-------------|
| Carat Weight | 2.34 CARATS |
| Color Grade | F |
| Clarity Grade | VS 1 |

ADDITIONAL GRADING INFORMATION

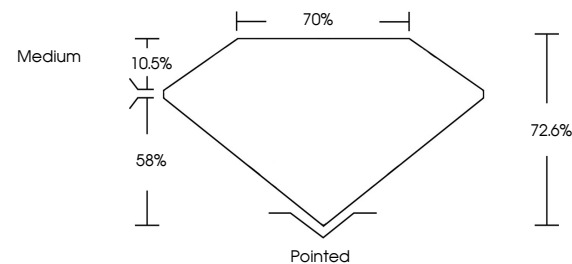
| | |
|----------------|---|
| Polish | EXCELLENT |
| Symmetry | EXCELLENT |
| Fluorescence | NONE |
| Inscription(s) |  LG627405955 |

Comments: This Laboratory Grown Diamond was created by Chemical Vapor Deposition (CVD) growth process and may include post-growth treatment.
Type IIa

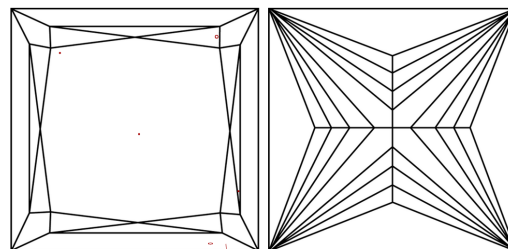
LABORATORY GROWN DIAMOND REPORT

LG627405955
Report verification at igi.org

PROPORTIONS



CLARITY CHARACTERISTICS



KEY TO SYMBOLS

Red symbols indicate internal characteristics.
Green symbols indicate external characteristics.

LABORATORY GROWN
DIAMOND REPORT

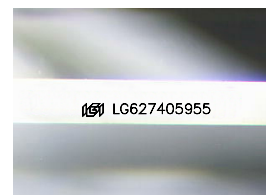
GRADING SCALES

CLARITY

| IF | VVS ¹⁻² | VS ¹⁻² | SI ¹⁻² | I ¹⁻³ |
|------------------------|--------------------------------|---------------------------|----------------------|------------------|
| Internally Flawless | Very Very Slightly Included | Very Slightly Included | Slightly Included | Included |

COLOR

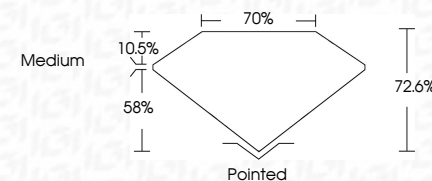
D E F G H I J Faint Very Light Light



Sample Image Used



| | |
|-------------------------|-----------------------------|
| April 1, 2024 | |
| IGI Report Number | LG627405955 |
| Description | LABORATORY GROWN DIAMOND |
| Shape and Cutting Style | PRINCESS CUT |
| Measurements | 7.19 X 7.15 X 5.19 MM |
| GRADING RESULTS | |
| Carat Weight | 2.34 CARATS |
| Color Grade | F |
| Clarity Grade | VS 1 |



ADDITIONAL GRADING INFORMATION

| | |
|----------------|-------------------|
| Polish | EXCELLENT |
| Symmetry | EXCELLENT |
| Fluorescence | NONE |
| Inscription(s) | (163) LG627405955 |

Comments: This Laboratory Grown Diamond was created by Chemical Vapor Deposition (CVD) growth process and may include post-growth treatment.
Type IIa



© IGI 2020, International Gemological Institute

FD - 10 20

www.igi.org

April 1, 2024
GI Report No LG627405955
PRINCESS CIT

| | |
|-----------------------|-------------|
| 1.19 X 7.15 X 5.19 MM | 2.34 CARATS |
| Carat Weight | VS 1 |
| Color Grade | 72.6% |
| Clarity Grade | 70% |
| Depth | Medium |
| Table | Pointed |
| Girdle | EXCELLENT |
| Culet | EXCELLENT |
| Polish | NONE |
| Symmetry | |
| Fluorescence | |

Comments:
This Laboratory Grown Diamond was created by Chemical Vapor Deposition (CVD) growth process and may include post-growth treatment.