



ELECTRONIC COPY

LABORATORY GROWN DIAMOND REPORT

March 20, 2024	
IGI Report Number	LG626416078
Description	LABORATORY GROWN DIAMOND
Shape and Cutting Style	ROUND BRILLIANT
Measurements	10.31 - 10.33 X 6.15 MM

GRADING RESULTS

Carat Weight	4.01 CARATS
Color Grade	G
Clarity Grade	VS 1
Cut Grade	IDEAL

ADDITIONAL GRADING INFORMATION

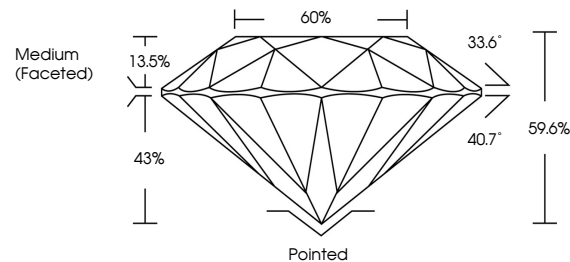
Polish	EXCELLENT
Symmetry	EXCELLENT
Fluorescence	NONE
Inscription(s)	15 LG626416078

Comments: This Laboratory Grown Diamond was created by Chemical Vapor Deposition (CVD) growth process and may include post-growth treatment.
Type IIa

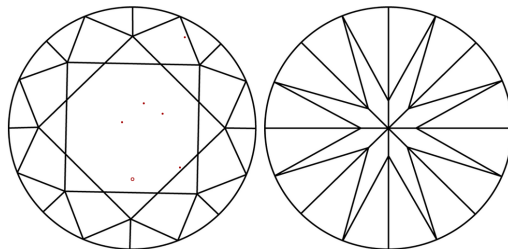
LABORATORY GROWN DIAMOND REPORT

LG626416078
Report verification at igi.org

PROPORTIONS



CLARITY CHARACTERISTICS



KEY TO SYMBOLS

Red symbols indicate internal characteristics.
Green symbols indicate external characteristics.

LABORATORY GROWN
DIAMOND REPORT

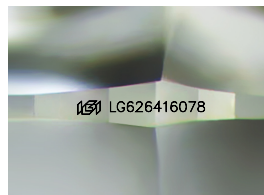
GRADING SCALES

CLARITY

IF	VVS ¹⁻²	VS ¹⁻²	SI ¹⁻²	I ¹⁻³
Internally Flawless	Very Very Slightly Included	Very Slightly Included	Slightly Included	Included

COLOR

D E F G H I J Faint Very Light Light



Sample Image Used



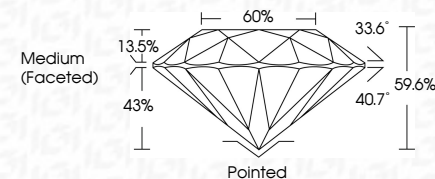
© IGI 2020, International Gemological Institute

FD - 10 20

LABORATORY GROWN DIAMOND REPORT

March 20, 2024	
IGI Report Number	LG626416078
Description	LABORATORY GROWN DIAMOND
Shape and Cutting Style	ROUND BRILLIANT
Measurements	10.31 - 10.33 X 6.15 MM

Carat Weight	4.01 CARATS
Color Grade	G
Clarity Grade	VS 1
Cut Grade	IDEAL



ADDITIONAL GRADING INFORMATION

Polish	EXCELLENT
Symmetry	EXCELLENT
Fluorescence	NONE
Inscription(s)	 LG626416078

Comments: This Laboratory Grown Diamond was created by Chemical Vapor Deposition (CVD) growth process and may include post-growth treatment.
Type IIa



March 2nd, 2024	Gf Report No LG26414078	ROUND BRILLIANT	10.31 - 10.33 X 6.15 MM	4.01 CARATS	VS 1	IDeAL	59.6%	60%	Medium (Faceted)	Poished	EXCELLENT	EXCELLENT	NONE	#G LG26414078
			Carat Weight		Color Grade	Clarity Grade	Cut Grade	Depth	Table	Girdle	Fluorescence	Symmetry	Inclusions (P)	
			Color Grade											
Comments:														
This is a Natural Growth Diamond was created by Chemical Vapor Deposition (CVD) growth process and may include post-growth treatment.														
Type IIa														