



ELECTRONIC COPY

LABORATORY GROWN DIAMOND REPORT

March 9, 2024	
IGI Report Number	LG625489158
Description	LABORATORY GROWN DIAMOND
Shape and Cutting Style	ROUND BRILLIANT
Measurements	9.13 - 9.16 X 5.66 MM

GRADING RESULTS

Carat Weight	2.96 CARATS
Color Grade	F
Clarity Grade	VS 1
Cut Grade	IDEAL

ADDITIONAL GRADING INFORMATION

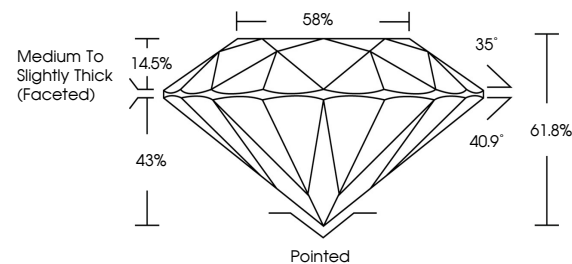
Polish	EXCELLENT
Symmetry	EXCELLENT
Fluorescence	NONE
Inscription(s)	 LG625489158

Comments: This Laboratory Grown Diamond was created by Chemical Vapor Deposition (CVD) growth process and may include post-growth treatment.
Type IIa

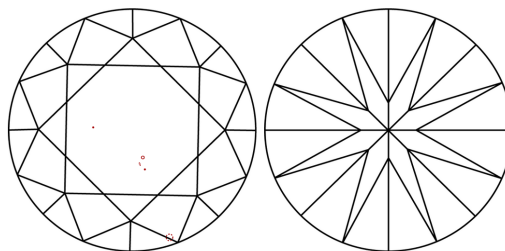
LABORATORY GROWN DIAMOND REPORT

LG625489158
Report verification at igi.org

PROPORTIONS



CLARITY CHARACTERISTICS



KEY TO SYMBOLS

Red symbols indicate internal characteristics.
Green symbols indicate external characteristics.

LABORATORY GROWN
DIAMOND REPORT

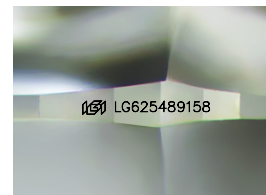
GRADING SCALES

CLARITY

IF	VVS ¹⁻²	VS ¹⁻²	SI ¹⁻²	I ¹⁻³
Internally Flawless	Very Very Slightly Included	Very Slightly Included	Slightly Included	Included

COLOR

D E F G H I J Faint Very Light Light



Sample Image Used



© IGI 2020, International Gemological Institute

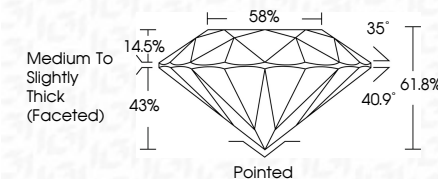
FD - 10 20

www.igi.org

LABORATORY GROWN DIAMOND REPORT

March 9, 2024	
IGI Report Number	LG625489158
Description	LABORATORY GROWN DIAMOND
Shape and Cutting Style	ROUND BRILLIANT
Measurements	9.13 - 9.16 X 5.66 MM

Carat Weight	2.96 CARATS
Color Grade	F
Clarity Grade	VS 1
Cut Grade	IDEAL



ADDITIONAL GRADING INFORMATION

Polish	EXCELLENT
Symmetry	EXCELLENT
Fluorescence	NONE
Inscription(s)	(15) LG625489158

Comments: This Laboratory Grown Diamond was created by Chemical Vapor Deposition (CVD) growth process and may include post-growth treatment.
Type IIa



March 9, 2024	GI Report No. LG525497158		2.0% CARATS	
ROUND BRILLIANT	Carat Weight	Color Grade	Clarity Grade	Vs 1
13.13 - 9.15 X 6.66 MM				IDEAL
	Depth			61.8%
	Table			85%
	Girdle			Medium to Slightly Thick (Faceted)
	Culet			Polished
	Polish			EXCELLENT
	Symmetry			EXCELLENT
	Fluorescence			NONE
	Inscriptions(s)			\$\$\$ LG525497158
Comments: The Laboratory Grown Diamond was created by Chemical Vapor Deposition (CVD) growth process and may include post-growth treatment.				