



ELECTRONIC COPY

LG625472617

Report verification at igi.org

LABORATORY GROWN DIAMOND REPORT

March 8, 2024
IGI Report Number: LG625472617
Description: LABORATORY GROWN DIAMOND
Shape and Cutting Style: ROUND BRILLIANT
Measurements: 9.19 - 9.24 X 5.68 MM

GRADING RESULTS

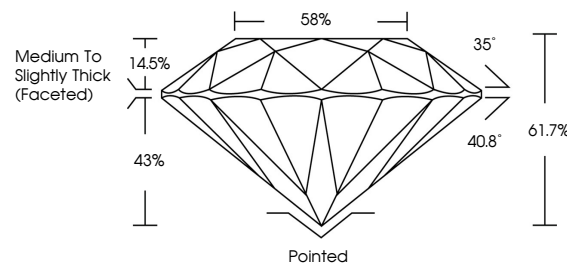
Carat Weight: 2.99 CARATS
Color Grade: F
Clarity Grade: VS 1
Cut Grade: IDEAL

ADDITIONAL GRADING INFORMATION

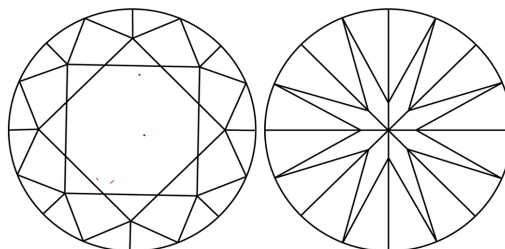
Polish: EXCELLENT
Symmetry: EXCELLENT
Fluorescence: NONE
Inscription(s): IGI LG625472617

Comments: This Laboratory Grown Diamond was created by Chemical Vapor Deposition (CVD) growth process and may include post-growth treatment. Type IIa

PROPORTIONS



CLARITY CHARACTERISTICS



KEY TO SYMBOLS

Red symbols indicate internal characteristics.
Green symbols indicate external characteristics.

GRADING SCALES

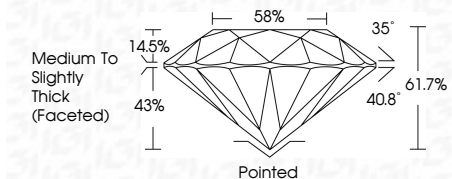
CLARITY

Table mapping clarity grades (IF, VVS, VS, SI, I) to descriptions (Internally Flawless, Very Very Slightly Included, etc.)

COLOR

Table mapping color grades (D, E, F, G, H, I, J) to descriptions (Faint, Very Light, Light)

March 8, 2024
IGI Report Number: LG625472617
Description: LABORATORY GROWN DIAMOND
Shape and Cutting Style: ROUND BRILLIANT
Measurements: 9.19 - 9.24 X 5.68 MM
GRADING RESULTS
Carat Weight: 2.99 CARATS
Color Grade: F
Clarity Grade: VS 1
Cut Grade: IDEAL



ADDITIONAL GRADING INFORMATION

Polish: EXCELLENT
Symmetry: EXCELLENT
Fluorescence: NONE
Inscription(s): IGI LG625472617
Comments: This Laboratory Grown Diamond was created by Chemical Vapor Deposition (CVD) growth process and may include post-growth treatment. Type IIa



Sample Image Used



IGI

March 8, 2024
IGI Report No LG625472617
ROUND BRILLIANT
9.19 - 9.24 X 5.68 MM
2.99 CARATS
Color Grade: F
Clarity Grade: VS 1
Depth: 61.7%
Table: 58%
Girdle: Medium To Slightly Thick (Faceted)
Culet: Pointed
Polish: EXCELLENT
Symmetry: EXCELLENT
Fluorescence: NONE
Inscription(s): IGI LG625472617
Comments: This Laboratory Grown Diamond was created by Chemical Vapor Deposition (CVD) growth process and may include post-growth treatment. Type IIa