



**ELECTRONIC COPY**

## LABORATORY GROWN DIAMOND REPORT

|                         |                             |
|-------------------------|-----------------------------|
| March 11, 2024          |                             |
| IGI Report Number       | LG625424193                 |
| Description             | LABORATORY GROWN<br>DIAMOND |
| Shape and Cutting Style | EMERALD CUT                 |
| Measurements            | 8.54 X 5.83 X 3.85 MM       |

## GRADING RESULTS

|               |            |
|---------------|------------|
| Carat Weight  | 1.87 CARAT |
| Color Grade   | G          |
| Clarity Grade | VS 1       |

### ADDITIONAL GRADING INFORMATION

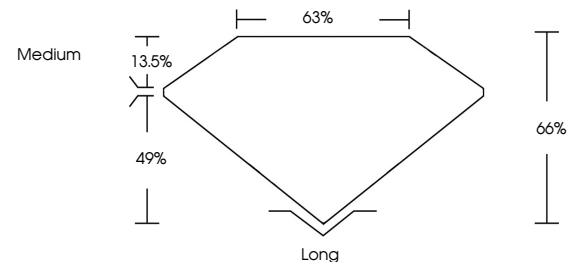
|                |   |
|----------------|---|
| Polish         | EXCELLENT   |
| Symmetry       | EXCELLENT   |
| Fluorescence   | NONE  |
| Inscription(s) |  LG625424193 |

Comments: This Laboratory Grown Diamond was created by Chemical Vapor Deposition (CVD) growth process and may include post-growth treatment.  
Type IIa

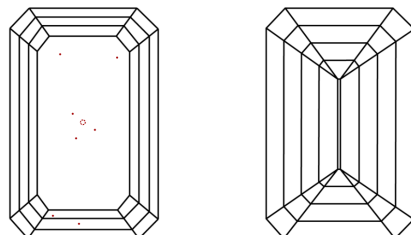
## LABORATORY GROWN DIAMOND REPORT

LG625424193  
Report verification at [igi.org](https://igi.org)

## PROPORTIONS



## CLARITY CHARACTERISTICS



## KEY TO SYMBOLS

Red symbols indicate internal characteristics.  
Green symbols indicate external characteristics.

LABORATORY GROWN  
DIAMOND REPORT

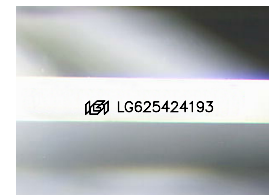
## GRADING SCALES

## CLARITY

| IF                  | VVS <sup>1-2</sup>          | VS <sup>1-2</sup>      | SI <sup>1-2</sup> | I <sup>1-3</sup> |
|---------------------|-----------------------------|------------------------|-------------------|------------------|
| Internally Flawless | Very Very Slightly Included | Very Slightly Included | Slightly Included | Included         |

**COLOR**

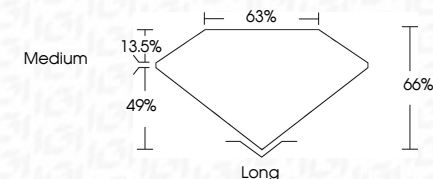
D E F G H I J Faint Very Light Light



Sample Image Used



|                         |                             |
|-------------------------|-----------------------------|
| March 11, 2024          |                             |
| IGI Report Number       | LG625424193                 |
| Description             | LABORATORY GROWN<br>DIAMOND |
| Shape and Cutting Style | EMERALD CUT                 |
| Measurements            | 8.54 X 5.83 X 3.85 MM       |
| <b>GRADING RESULTS</b>  |                             |
| Carat Weight            | 1.87 CARAT                  |
| Color Grade             | G                           |
| Clarity Grade           | VS 1                        |



### ADDITIONAL GRADING INFORMATION

|                |                  |
|----------------|------------------|
| Polish         | EXCELLENT        |
| Symmetry       | EXCELLENT        |
| Fluorescence   | NONE             |
| Inscription(s) | (16) LG625424193 |

Comments: This Laboratory Grown Diamond was created by Chemical Vapor Deposition (CVD) growth process and may include post-growth treatment.  
Type IIa



© IGI 2020, International Gemological Institute

FD - 10 20

**www.igi.org**

THIS DOCUMENT WAS PRODUCED WITH THE FOLLOWING SECURITY MEASURES: SPECIAL DOCUMENT PAPER, INK SCREENS, WATERMARK, BACKGROUND DESIGNS, HOLOGRAM AND OTHER SECURITY FEATURES NOT LISTED AND DO EXCEED DOCUMENT SECURITY INDUSTRY GUIDELINES

March 11, 2024  
GI Report No LG625424193

|                       |            |
|-----------------------|------------|
| 3.54 X 5.83 X 3.85 MM | 1.87 CARAT |
| Carat Weight          | VS 1       |
| Color Grade           | G          |
| Clarity Grade         | 65%        |
| Depth                 | 63%        |
| Table                 | Medium     |
| Girdle                | Long       |
| Culet                 | EXCELLENT  |
| Polish                | EXCELLENT  |
| Symmetry              | NONE       |
| Fluorescence          |            |

**Comments:**  
This Laboratory Grown Diamond was created by Chemical Vapor Deposition (CVD) growth process and may include post-growth treatment.