



ELECTRONIC COPY

LABORATORY GROWN DIAMOND REPORT

March 6, 2024	
IGI Report Number	LG624425139
Description	LABORATORY GROWN DIAMOND
Shape and Cutting Style	PRINCESS CUT
Measurements	8.63 X 8.39 X 6.08 MM

GRADING RESULTS

Carat Weight	3.88 CARATS
Color Grade	G
Clarity Grade	VS 1

ADDITIONAL GRADING INFORMATION

Polish	EXCELLENT
Symmetry	EXCELLENT
Fluorescence	NONE
Inscription(s)	 LG624425139

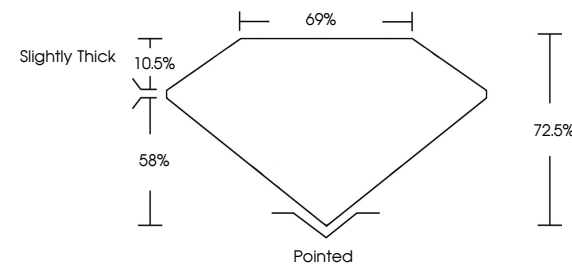
Comments: This Laboratory Grown Diamond was created by Chemical Vapor Deposition (CVD) growth process and may include post-growth treatment.
Type IIa

LABORATORY GROWN DIAMOND REPORT

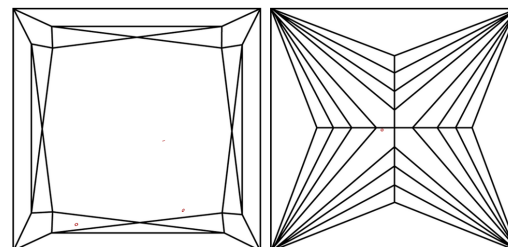
LG624425139

Report verification at igi.org

PROPORTIONS



CLARITY CHARACTERISTICS



KEY TO SYMBOLS

Red symbols indicate internal characteristics.
Green symbols indicate external characteristics.

LABORATORY GROWN
DIAMOND REPORT

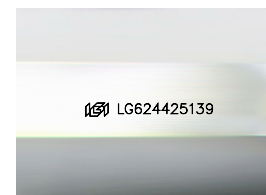
GRADING SCALES

CLARITY

IF	VVS ¹⁻²	VS ¹⁻²	SI ¹⁻²	I ¹⁻³
Internally Flawless	Very Very Slightly Included	Very Slightly Included	Slightly Included	Included

COLOR

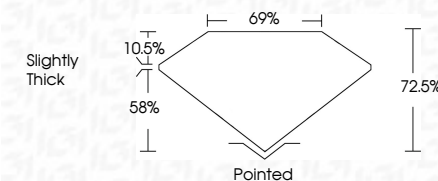
D E F G H I J Faint Very Light Light



Sample Image Used



March 6, 2024	
IGI Report Number	LG624425139
Description	LABORATORY GROWN DIAMOND
Shape and Cutting Style	PRINCESS CUT
Measurements	8.63 X 8.39 X 6.08 MM
GRADING RESULTS	
Carat Weight	3.88 CARATS
Color Grade	G
Clarity Grade	VS 1



ADDITIONAL GRADING INFORMATION

Polish	EXCELLENT
Symmetry	EXCELLENT
Fluorescence	NONE
Inscription(s)	(15) LG624425139

Comments: This Laboratory Grown Diamond was created by Chemical Vapor Deposition (CVD) growth process and may include post-growth treatment.
Type IIa



© IGI 2020, International Gemological Institute

FD - 10 20

www.igi.org

March 6, 2024
GI Report No LG624425139

PRINCESS CUT	6.65 X 8.95 X 4.08 MM	3.88 CARATS	
	Carat Weight	VS 1	Pointed
	Color Grade	72.8%	EXCELLENT
	Clarity Grade	65%	EXCELLENT
	Depth	Slightly Thick	NONE
	Table		
	Girdle		
	Culet		
	Polish		
	Symmetry		
	Fluorescence		

Comments:
This Laboratory Grown Diamond was created by Chemical Vapor Deposition (CVD) growth process and may include post-growth treatment.