

**ELECTRONIC COPY**

## LABORATORY GROWN DIAMOND REPORT

February 27, 2024	
IGI Report Number	LG623434858
Description	LABORATORY GROWN DIAMOND
Shape and Cutting Style	ROUND BRILLIANT
Measurements	9.68 - 9.71 X 5.81 MM

## GRADING RESULTS

Carat Weight	3.32 CARATS
Color Grade	G
Clarity Grade	VS 1
Cut Grade	IDEAL

### ADDITIONAL GRADING INFORMATION

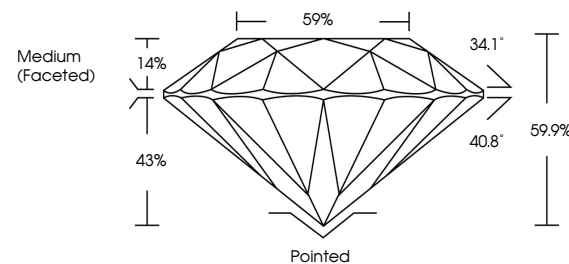
Polish	EXCELLENT
Symmetry	EXCELLENT
Fluorescence	NONE
Inscription(s)	15 LG623434858

Comments: This Laboratory Grown Diamond was created by Chemical Vapor Deposition (CVD) growth process and may include post-growth treatment.  
Type IIa

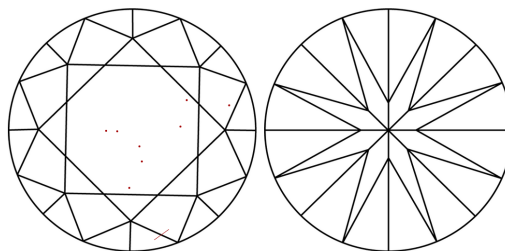
## LABORATORY GROWN DIAMOND REPORT

LG623434858  
Report verification at [igi.org](https://igi.org)

## PROPORTIONS



## CLARITY CHARACTERISTICS



### KEY TO SYMBOLS

Red symbols indicate internal characteristics.  
Green symbols indicate external characteristics.

LABORATORY GROWN  
DIAMOND REPORT

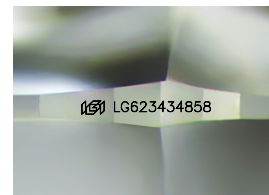
## GRADING SCALES

## CLARITY

IF	VVS <sup>1-2</sup>	VS <sup>1-2</sup>	SI <sup>1-2</sup>	I <sup>1-3</sup>
Internally Flawless	Very Very Slightly Included	Very Slightly Included	Slightly Included	Included

**COLOR**

D E F G H I J Faint Very Light Light



Sample Image Used



© IGI 2020, International Gemological Institute

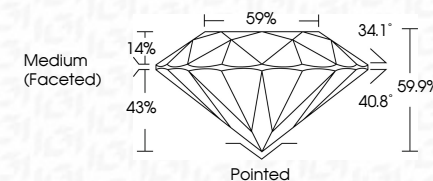
FD - 10 20

## LABORATORY GROWN DIAMOND REPORT

February 27, 2024	
IGI Report Number	LG623434858
Description	LABORATORY GROWN DIAMOND
Shape and Cutting Style	ROUND BRILLIANT
Measurements	9.68 - 9.71 X 5.81 MM

## GRADING RESULTS

Carat Weight	3.32 CARATS
Color Grade	G
Clarity Grade	VS 1
Cut Grade	IDEAL



### ADDITIONAL GRADING INFORMATION

Polish	EXCELLENT
Symmetry	EXCELLENT
Fluorescence	NONE
Inscription(s)	(15) LG623434858

Comments: This Laboratory Grown Diamond was created by Chemical Vapor Deposition (CVD) growth process and may include post-growth treatment.  
Type IIa



<b>February 27, 2024</b>	<b>GI Report No.</b> LG628-49858	<b>ROUND BRILLANT</b>
		<b>3.32 CARATS    G</b>
<b>V.S.I N.M.</b>		<b>VS 1</b>
<b>Color Weight</b>		<b>IDEAL</b>
<b>Color Grade</b>		<b>65%</b>
<b>Cut Grade</b>		<b>59%</b>
<b>Depth</b>		<b>(Faceted)</b>
<b>Table</b>		<b>Medium</b>
<b>Girdle</b>		
<b>Culet</b>		<b>Poited</b>
<b>Polish</b>		<b>EXCELLENT</b>
<b>Symmetry</b>		<b>EXCELLENT</b>
<b>Fluorescence</b>		<b>NONE</b>
<b>Inscriptions(s)</b>		<b>#61 LG628-49858</b>
<b>Comments:</b> Treated by Chemical Vapor Deposition (CVD) growth process and may include post-growth treatment. <b>Type IIa</b>		