

ELECTRONIC COPY

LABORATORY GROWN DIAMOND REPORT

February 27, 2024	
IGI Report Number	LG623434856
Description	LABORATORY GROWN DIAMOND
Shape and Cutting Style	ROUND BRILLIANT
Measurements	10.28 - 10.33 X 6.24 MM

GRADING RESULTS

Carat Weight	4.07 CARATS
Color Grade	G
Clarity Grade	VS 2
Cut Grade	IDEAL

ADDITIONAL GRADING INFORMATION

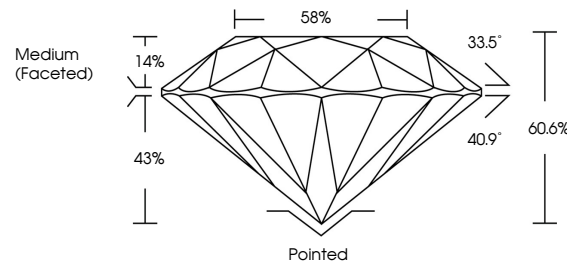
Polish	EXCELLENT
Symmetry	EXCELLENT
Fluorescence	NONE
Inscription(s)	15 LG623434856

Comments: This Laboratory Grown Diamond was created by Chemical Vapor Deposition (CVD) growth process and may include post-growth treatment.
Type IIa

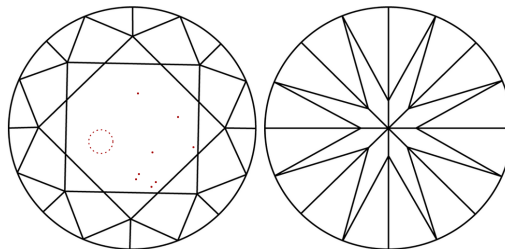
LABORATORY GROWN DIAMOND REPORT

LG623434856
Report verification at igi.org

PROPORTIONS



CLARITY CHARACTERISTICS



KEY TO SYMBOLS

Red symbols indicate internal characteristics.
Green symbols indicate external characteristics.

LABORATORY GROWN
DIAMOND REPORT

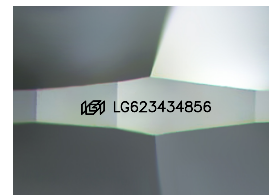
GRADING SCALES

CLARITY

IF	VVS ¹⁻²	VS ¹⁻²	SI ¹⁻²	I ¹⁻³
Internally Flawless	Very Very Slightly Included	Very Slightly Included	Slightly Included	Included

COLOR

D E F G H I J Faint Very Light Light



Sample Image Used

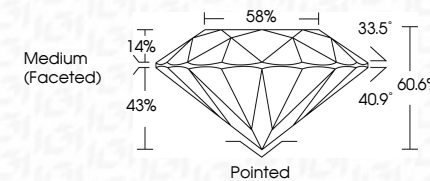


© IGI 2020, International Gemological Institute


FD - 10 20



February 27, 2024	
IGI Report Number	LG623434856
Description	LABORATORY GROWN DIAMOND
Shape and Cutting Style	ROUND BRILLIANT
Measurements	10.28 - 10.33 X 6.24 MM
GRADING RESULTS	
Carat Weight	4.07 CARATS
Color Grade	G
Clarity Grade	VS 2
Cut Grade	IDEAL



ADDITIONAL GRADING INFORMATION

Polish	EXCELLENT
Symmetry	EXCELLENT
Fluorescence	NONE
Inscription(s)	 LG623434856
<p>Comments: This Laboratory Grown Diamond was created by Chemical Vapor Deposition (CVD) growth process and may include post-growth treatment.</p> <p>Type IIa</p>	

February 27, 2024	Report No. LG230434855	10.28 - 10.33 x 6.24 MM	4.07 CARATS	
ROUND BRILLIANT		Color Weight	G	
		Color Grade	VS 2	
		Clarity Grade	IDEAL	
		Cut Grade	60.6%	
		Depth	58%	
		Table	Medium (faced)	
		Girdle		
		Culet	Pointed	
		Polish	EXCELLENT	
		Symmetry	EXCELLENT	
		Fluorescence	NONE	
		Inscription(s)	#81 LG230434855	
Comments:				
This Laboratory Grown Diamond was created by Chemical Vapor Deposition (CVD) growth process and may include post-growth treatment.				
page 1a				