



ELECTRONIC COPY

LABORATORY GROWN DIAMOND REPORT

February 23, 2024	
IGI Report Number	LG623434795
Description	LABORATORY GROWN DIAMOND
Shape and Cutting Style	ROUND BRILLIANT
Measurements	9.42 - 9.48 X 5.71 MM

GRADING RESULTS

Carat Weight	3.10 CARATS
Color Grade	G
Clarity Grade	VS 1
Cut Grade	IDEAL

ADDITIONAL GRADING INFORMATION

Polish	EXCELLENT
Symmetry	EXCELLENT
Fluorescence	NONE
Inscription(s)	 LG623434795

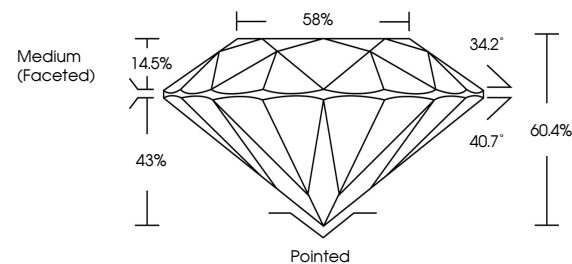
Comments: This Laboratory Grown Diamond was created by Chemical Vapor Deposition (CVD) growth process and may include post-growth treatment.
Type IIa

LABORATORY GROWN DIAMOND REPORT

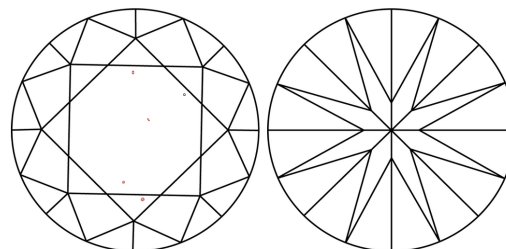
LG623434795

Report verification at igi.org

PROPORTIONS



CLARITY CHARACTERISTICS



KEY TO SYMBOLS

Red symbols indicate internal characteristics.
Green symbols indicate external characteristics.

LABORATORY GROWN
DIAMOND REPORT

GRADING SCALES

CLARITY

IF	VVS ¹⁻²	VS ¹⁻²	SI ¹⁻²	I ¹⁻³
Internally Flawless	Very Very Slightly Included	Very Slightly Included	Slightly Included	Included

COLOR

D E F G H I J Faint Very Light Light



Sample Image Used



© IGI 2020, International Gemological Institute

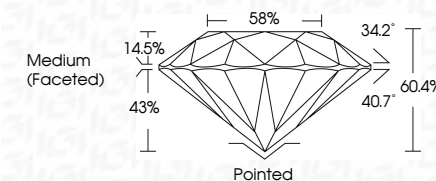
FD - 10 20

www.igi.org

LABORATORY GROWN DIAMOND REPORT

February 23, 2024	
IGI Report Number	LG623434795
Description	LABORATORY GROWN DIAMOND
Shape and Cutting Style	ROUND BRILLIANT
Measurements	9.42 - 9.48 X 5.71 MM

GRADING RESULTS	
Carat Weight	3.10 CARATS
Color Grade	G
Clarity Grade	VS 1
Cut Grade	IDEAL



ADDITIONAL GRADING INFORMATION

Polish	EXCELLENT
Symmetry	EXCELLENT
Fluorescence	NONE
Inscription(s)	(16) LG623434795

Comments: This Laboratory Grown Diamond was created by Chemical Vapor Deposition (CVD) growth process and may include post-growth treatment.
Type IIa



	February 23, 2024	
	GJ Permit No L628394795	
SOUND BELLICANT		
	MM 42 - 42 - 9.48 X 5.71 MM	
	Coral Weight	3.10 CARATS
	Color Grade	G
	Clarity Grade	VS-1
	Carat Grade	IDEPAL
	Depth	60.4%
	Table	58%
	Diamond Grade	Medium (Faceted)
	Culet	Poished
	Polish	EXCELLENT
	Symmetry	EXCELLENT
	Fluorescence	NONE
	Inscriptions(s)	(g) LS628394795
Comments:		
	Created by Crown Diamond Usa Inspected by Crown Diamond Usa CVD growth process and may include post-growth treatment. Type IIG	