

ELECTRONIC COPY

LABORATORY GROWN DIAMOND REPORT

February 21, 2024	
IGI Report Number	LG622494854
Description	LABORATORY GROWN DIAMOND
Shape and Cutting Style	ROUND BRILLIANT
Measurements	9.67 - 9.73 X 5.85 MM

GRADING RESULTS

Carat Weight	3.37 CARATS
Color Grade	G
Clarity Grade	VS 2
Cut Grade	IDEAL

ADDITIONAL GRADING INFORMATION

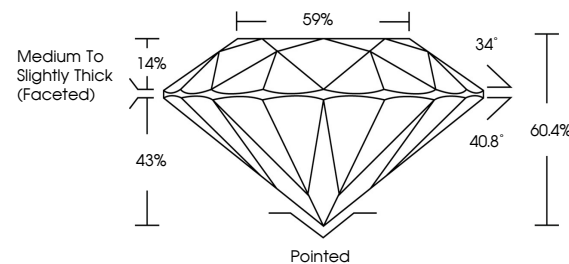
Polish	EXCELLENT
Symmetry	EXCELLENT
Fluorescence	NONE
Inscription(s)	 LG622494854

Comments: This Laboratory Grown Diamond was created by Chemical Vapor Deposition (CVD) growth process and may include post-growth treatment.
Type IIa

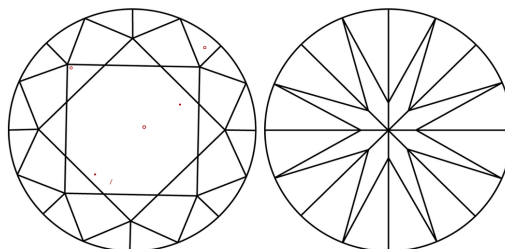
LABORATORY GROWN DIAMOND REPORT

LG622494854
Report verification at igi.org

PROPORTIONS



CLARITY CHARACTERISTICS



KEY TO SYMBOLS

Red symbols indicate internal characteristics.
Green symbols indicate external characteristics.

LABORATORY GROWN
DIAMOND REPORT

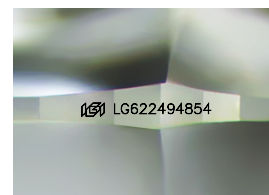
GRADING SCALES

CLARITY

IF	VVS ¹⁻²	VS ¹⁻²	SI ¹⁻²	I ¹⁻³
Internally Flawless	Very Very Slightly Included	Very Slightly Included	Slightly Included	Included

COLOR

D E F G H I J Faint Very Light Light



Sample Image Used

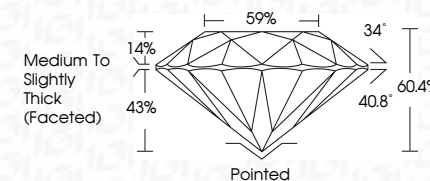


© IGI 2020, International Gemological Institute


FD - 10 20



February 21, 2024	
IGI Report Number	LG622494854
Description	LABORATORY GROWN DIAMOND
Shape and Cutting Style	ROUND BRILLIANT
Measurements	9.67 - 9.73 X 5.85 MM
GRADING RESULTS	
Carat Weight	3.37 CARATS
Color Grade	G
Clarity Grade	VS 2
Cut Grade	IDEAL



ADDITIONAL GRADING INFORMATION

Polish	EXCELLENT
Symmetry	EXCELLENT
Fluorescence	NONE
Inscription(s)	 LG622494854
Comments: This Laboratory Grown Diamond was created by Chemical Vapor Deposition (CVD) growth process and may include post-growth treatment.	
Type IIA	

February 21, 2024	3.67 - 9.73 X 5.85 MM	Carat Weight	3.37 CARATS
GI Report No LG229494854		Color Grade	G
ROUND BRILLIANT		Clarity Grade	VS2
		Cut Grade	IDeAL
		Depth	60.4%
		Table	59%
		Girdle	Medium to Slightly Thick (Focused)
		Culet	Pointed
		Pavil. Whisk	EXCELLENT
		Symmetry	EXCELLENT
		Fluorescence (incriptions/ptns)	NONE
			(#) LG229494854
		Comments:	
			The Laboratory Grown Diamond was created by Chemical Vapor Deposition (CVD) growth process and may include post-growth treatment.
			type Ia