



ELECTRONIC COPY

LABORATORY GROWN DIAMOND REPORT

February 22, 2024	
IGI Report Number	LG622486665
Description	LABORATORY GROWN DIAMOND
Shape and Cutting Style	ROUND BRILLIANT
Measurements	9.12 - 9.17 X 5.57 MM

GRADING RESULTS

Carat Weight	2.87 CARATS
Color Grade	G
Clarity Grade	VS 1
Cut Grade	IDEAL

ADDITIONAL GRADING INFORMATION

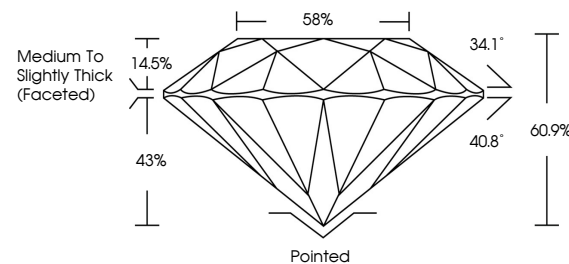
Polish	EXCELLENT
Symmetry	EXCELLENT
Fluorescence	NONE
Inscription(s)	 LG622486665

Comments: This Laboratory Grown Diamond was created by Chemical Vapor Deposition (CVD) growth process and may include post-growth treatment.
Type IIa

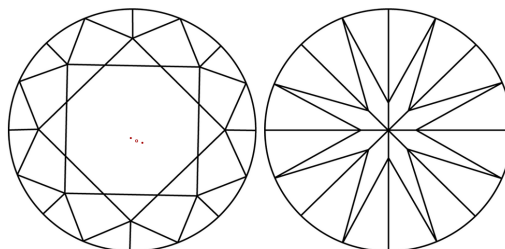
LABORATORY GROWN DIAMOND REPORT

LG622486665
Report verification at igi.org

PROPORTIONS



CLARITY CHARACTERISTICS



KEY TO SYMBOLS

Red symbols indicate internal characteristics.
Green symbols indicate external characteristics.

LABORATORY GROWN
DIAMOND REPORT

GRADING SCALES

CLARITY

IF	VVS ¹⁻²	VS ¹⁻²	SI ¹⁻²	I ¹⁻³
Internally Flawless	Very Very Slightly Included	Very Slightly Included	Slightly Included	Included

COLOR

D E F G H I J Faint Very Light Light



Sample Image Used



© IGI 2020, International Gemological Institute

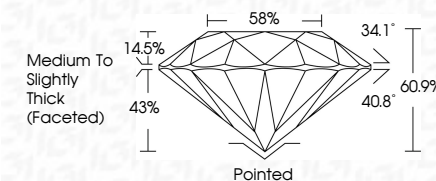
FD - 10 20

www.igi.org

LABORATORY GROWN DIAMOND REPORT

February 22, 2024	
IGI Report Number	LG622486665
Description	LABORATORY GROWN DIAMOND
Shape and Cutting Style	ROUND BRILLIANT
Measurements	9.12 - 9.17 X 5.57 MM

GRADING RESULTS	
Carat Weight	2.87 CARATS
Color Grade	G
Clarity Grade	VS 1
Cut Grade	IDEAL



ADDITIONAL GRADING INFORMATION

Polish	EXCELLENT
Symmetry	EXCELLENT
Fluorescence	NONE
Inscription(s)	151 LG62248666

Comments: This Laboratory Grown Diamond was created by Chemical Vapor Deposition (CVD) growth process and may include post-growth treatment.
Type IIa



February 22, 2024	2.87 CARATS	VS 1	Polished	NONE	1691 LG222486665	Comments: The Laboratory Grown Diamond was created using a Chemical Vapor Deposition (CVD) growth process and may include post-growth treatment.
GI Report No. LG222486665	Color Grade	IDEAL	Excellent			
ROUND BRILLIANT	Clarity Grade	60.9%	Excellent			
12 - 12 x 5.17 MM	Cut Grade	58%	Excellent			
	Depth	Medium to slightly Thick (faceted)				
	Table		Culet			
	Girdle		Polish			
			Symmetry			
			Fluorescence			
			Inscriptions(s)			