

ELECTRONIC COPY

LABORATORY GROWN DIAMOND REPORT

February 12, 2024	
IGI Report Number	LG621492864
Description	LABORATORY GROWN DIAMOND
Shape and Cutting Style	ROUND BRILLIANT
Measurements	10.10 - 10.13 X 6.18 MM

GRADING RESULTS

Carat Weight	3.88 CARATS
Color Grade	G
Clarity Grade	VS 1
Cut Grade	IDEAL

ADDITIONAL GRADING INFORMATION

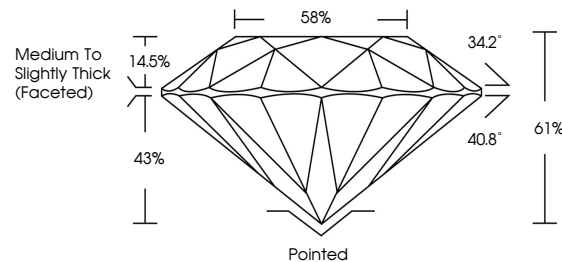
Polish	EXCELLENT
Symmetry	EXCELLENT
Fluorescence	NONE
Inscription(s)	15 LG621492864

Comments: This Laboratory Grown Diamond was created by Chemical Vapor Deposition (CVD) growth process and may include post-growth treatment.
Type IIa

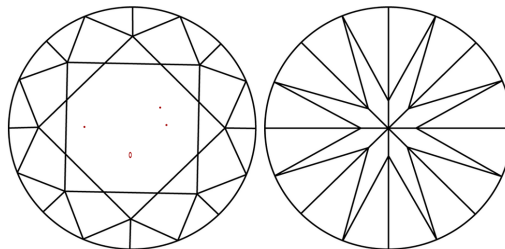
LABORATORY GROWN DIAMOND REPORT

LG621492864
Report verification at igi.org

PROPORTIONS



CLARITY CHARACTERISTICS



KEY TO SYMBOLS

Red symbols indicate internal characteristics.
Green symbols indicate external characteristics.

LABORATORY GROWN
DIAMOND REPORT

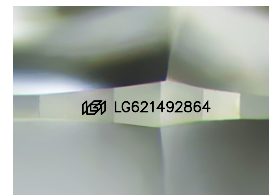
GRADING SCALES

CLARITY

IF	VVS ¹⁻²	VS ¹⁻²	SI ¹⁻²	I ¹⁻³
Internally Flawless	Very Very Slightly Included	Very Slightly Included	Slightly Included	Included

COLOR

D E F G H I J Faint Very Light Light



Sample Image Used



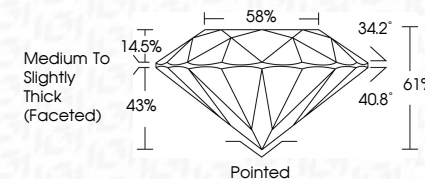
© IGI 2020, International Gemological Institute

FD - 10 20

LABORATORY GROWN DIAMOND REPORT

February 12, 2024	
IGI Report Number	LG621492864
Description	LABORATORY GROWN DIAMOND
Shape and Cutting Style	ROUND BRILLIANT
Measurements	10.10 - 10.13 X 6.18 MM

GRADING RESULTS	
Carat Weight	3.88 CARATS
Color Grade	G
Clarity Grade	VS 1
Cut Grade	IDEAL



ADDITIONAL GRADING INFORMATION

Polish	EXCELLENT
Symmetry	EXCELLENT
Fluorescence	NONE
Inscription(s)	157 LG621492864

Comments: This Laboratory Grown Diamond was created by Chemical Vapor Deposition (CVD) growth process and may include post-growth treatment.
Type IIa



February 12, 2024	3.88 CARATS	VS 1	Medium to Slightly Thick (Faceted)	Polished	NONE	#691 LG21492854	Comments: Treated by Crown Diamond via enhanced Chemical Vapor Deposition (CVD) growth process and may include post-growth treatment.
GI Report No: LG21492854	Color Grade	Depth		Excellent			
ROUND BRILLIANT	Carat Weight	Clarity Grade		Polymeth			
10.10 - 10.13 X 6.18 MM	Cut Grade	Table		Fluorescence			
		Girdle		Inscriptions(s)			
				Quiet			Type IIA

Comments:
This Laboratory Grown Diamond was created by Chemical Vapor Deposition (CVD) growth process and may include post-growth treatment.