

ELECTRONIC COPY

LABORATORY GROWN DIAMOND REPORT

February 15, 2024	
IGI Report Number	LG621435948
Description	LABORATORY GROWN DIAMOND
Shape and Cutting Style	ROUND BRILLIANT
Measurements	9.08 - 9.13 X 5.48 MM

GRADING RESULTS

Carat Weight	2.76 CARATS
Color Grade	G
Clarity Grade	VS 1
Cut Grade	IDEAL

ADDITIONAL GRADING INFORMATION

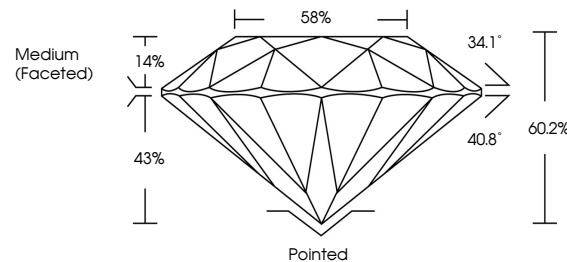
Polish	EXCELLENT
Symmetry	EXCELLENT
Fluorescence	NONE
Inscription(s)	15 LG621435948

Comments: This Laboratory Grown Diamond was created by Chemical Vapor Deposition (CVD) growth process and may include post-growth treatment.
Type IIa

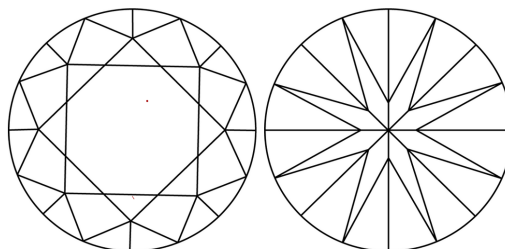
LABORATORY GROWN DIAMOND REPORT

LG621435948
Report verification at igi.org

PROPORTIONS



CLARITY CHARACTERISTICS



KEY TO SYMBOLS

Red symbols indicate internal characteristics.
Green symbols indicate external characteristics.

LABORATORY GROWN
DIAMOND REPORT

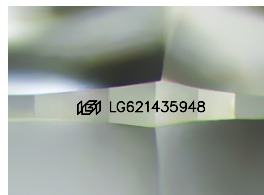
GRADING SCALES

CLARITY

IF	VVS ¹⁻²	VS ¹⁻²	SI ¹⁻²	I ¹⁻³
Internally Flawless	Very Very Slightly Included	Very Slightly Included	Slightly Included	Included

COLOR

D E F G H I J Faint Very Light Light



Sample Image Used

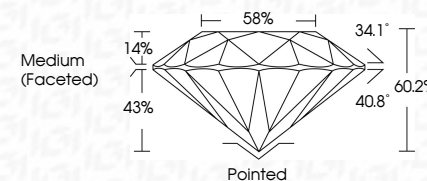


© IGI 2020, International Gemological Institute


FD - 10 20



February 15, 2024	
IGI Report Number	LG621435948
Description	LABORATORY GROWN DIAMOND
Shape and Cutting Style	ROUND BRILLIANT
Measurements	9.08 - 9.13 X 5.48 MM
GRADING RESULTS	
Carat Weight	2.76 CARATS
Color Grade	G
Clarity Grade	VS 1
Cut Grade	IDEAL



ADDITIONAL GRADING INFORMATION

Polish	EXCELLENT
Symmetry	EXCELLENT
Fluorescence	NONE
Inscription(s)	 LG621435948
<p>Comments: This Laboratory Grown Diamond was created by Chemical Vapor Deposition (CVD) growth process and may include post-growth treatment.</p> <p>Type IIa</p>	

February 15, 2024	2.76 CARATS	
GI Report No LG621435948	VS 1	
ROUND BRILLIANT	IDEAL	
	60.2%	
	85%	
9.08 - 9.13 X 5.48 MM	Medium (Foshee®)	
Carat Weight	Clarity Grade	Polished
Color Grade	Our Grade	EXCELLENT
	Depth	BY CHEMIST
	Table	Symmetry
	Girdle	Fluorescence
		Inscriptions(s)
		NONE
		1691 LG621435948
Comments: This Heavy Crown Diamond was treated by Chemical Vapor Deposition (CVD) growth process and may include post-growth treatment.		
	Type IIA	