

ELECTRONIC COPY

LABORATORY GROWN DIAMOND REPORT

| | |
|-------------------------|-----------------------------|
| February 13, 2024 | |
| IGI Report Number | LG621409048 |
| Description | LABORATORY GROWN DIAMOND |
| Shape and Cutting Style | ROUND BRILLIANT |
| Measurements | 10.27 - 10.32 X 6.29 MM |

GRADING RESULTS

| | |
|---------------|-------------|
| Carat Weight | 4.05 CARATS |
| Color Grade | G |
| Clarity Grade | VS 1 |
| Cut Grade | IDEAL |

ADDITIONAL GRADING INFORMATION

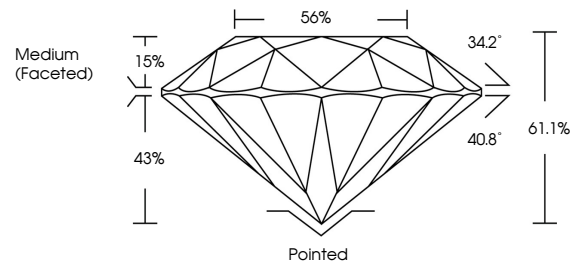
| | |
|----------------|----------------|
| Polish | EXCELLENT |
| Symmetry | EXCELLENT |
| Fluorescence | NONE |
| Inscription(s) | 13 LG621409048 |

Comments: This Laboratory Grown Diamond was created by Chemical Vapor Deposition (CVD) growth process and may include post-growth treatment. Type IIa

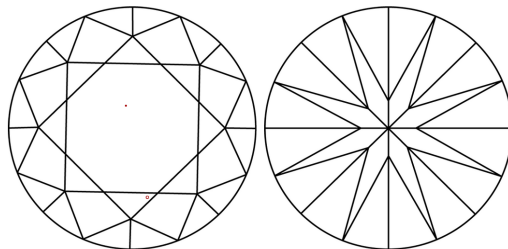
LABORATORY GROWN DIAMOND REPORT

LG621409048
Report verification at igi.org

PROPORTIONS



CLARITY CHARACTERISTICS



KEY TO SYMBOLS

Red symbols indicate internal characteristics.
Green symbols indicate external characteristics.

LABORATORY GROWN
DIAMOND REPORT

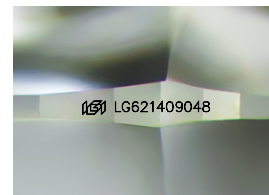
GRADING SCALES

CLARITY

| IF | VVS ¹⁻² | VS ¹⁻² | SI ¹⁻² | I ¹⁻³ |
|---------------------|-----------------------------|------------------------|-------------------|------------------|
| Internally Flawless | Very Very Slightly Included | Very Slightly Included | Slightly Included | Included |

COLOR

D E F G H I J Faint Very Light Light



Sample Image Used



© IGI 2020, International Gemological Institute

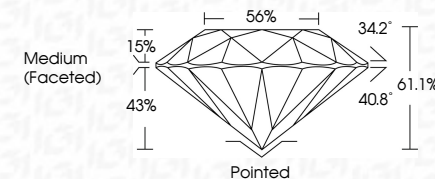
FD - 10 20

LABORATORY GROWN DIAMOND REPORT

| | |
|-------------------------|-----------------------------|
| February 13, 2024 | |
| IGI Report Number | LG621409048 |
| Description | LABORATORY GROWN DIAMOND |
| Shape and Cutting Style | ROUND BRILLIANT |
| Measurements | 10.27 - 10.32 X 6.29 MM |

GRADING RESULTS

| | |
|---------------|-------------|
| Carat Weight | 4.05 CARATS |
| Color Grade | G |
| Clarity Grade | VS 1 |
| Cut Grade | IDEAL |



ADDITIONAL GRADING INFORMATION

| | |
|----------------|------------------|
| Polish | EXCELLENT |
| Symmetry | EXCELLENT |
| Fluorescence | NONE |
| Inscription(s) | (15) LG621409048 |

Comments: This Laboratory Grown Diamond was created by Chemical Vapor Deposition (CVD) growth process and may include post-growth treatment.
Type IIa



| | | | |
|---------------------------|-------------|------------------|-----------------|
| February 13, 2024 | 405 CARATS | VS 1 | Pointed |
| GI Report No. LS231479048 | | IDEAL | EXCELLENT |
| | | 61.1% | EXCELLENT |
| | | 56% | NONE |
| | | Medium (faceted) | 181 LS231479048 |
| 10.27 - 10.32 X 6.29 MM | | | |
| Carat Weight | Color Grade | Clarity Grade | Cut Grade |
| | | | Depth |
| | | | Table |
| | | | Girdle |
| | | | Culet |
| | | | Polish |
| | | | Symmetry |
| | | | Fluorescence |
| | | | Inscriptions(s) |

Comments:
 Natural Fancy Crown Diamond was treated by Chemical Vapor Deposition (CVD) growth process and may include post-growth treatment.
 Type IIA