



ELECTRONIC COPY

LABORATORY GROWN DIAMOND REPORT

February 14, 2024	
IGI Report Number	LG621405470
Description	LABORATORY GROWN DIAMOND
Shape and Cutting Style	ROUND BRILLIANT
Measurements	10.34 - 10.38 X 6.13 MM

GRADING RESULTS

Carat Weight	4.02 CARATS
Color Grade	G
Clarity Grade	VS 1
Cut Grade	IDEAL

ADDITIONAL GRADING INFORMATION

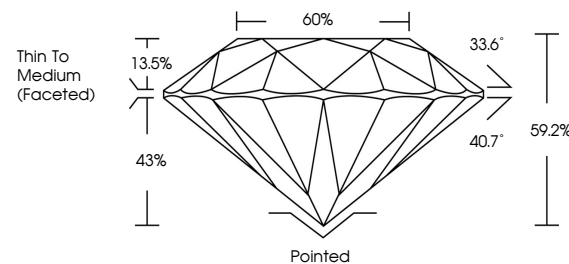
Polish	EXCELLENT
Symmetry	EXCELLENT
Fluorescence	NONE
Inscription(s)	15 LG621405470

Comments: This Laboratory Grown Diamond was created by Chemical Vapor Deposition (CVD) growth process and may include post-growth treatment.
Type IIa

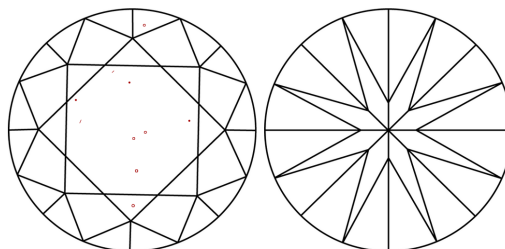
LABORATORY GROWN DIAMOND REPORT

LG621405470
Report verification at igi.org

PROPORTIONS



CLARITY CHARACTERISTICS



KEY TO SYMBOLS

Red symbols indicate internal characteristics.
Green symbols indicate external characteristics.

LABORATORY GROWN
DIAMOND REPORT

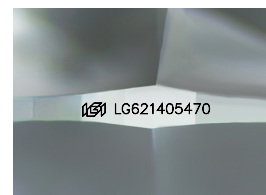
GRADING SCALES

CLARITY

IF	VVS ¹⁻²	VS ¹⁻²	SI ¹⁻²	I ¹⁻³
Internally Flawless	Very Very Slightly Included	Very Slightly Included	Slightly Included	Included

COLOR

D E F G H I J Faint Very Light Light



Sample Image Used



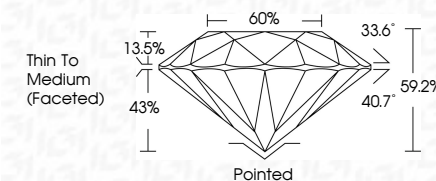
© IGI 2020, International Gemological Institute

FD - 10 20

LABORATORY GROWN DIAMOND REPORT

February 14, 2024	
IGI Report Number	LG621405470
Description	LABORATORY GROWN DIAMOND
Shape and Cutting Style	ROUND BRILLIANT
Measurements	10.34 - 10.38 X 6.13 MM

GRADING RESULTS	
Carat Weight	4.02 CARATS
Color Grade	G
Clarity Grade	VS 1
Cut Grade	IDEAL



ADDITIONAL GRADING INFORMATION

Polish	EXCELLENT
Symmetry	EXCELLENT
Fluorescence	NONE
Inscription(s)	(15) LG621405470

Comments: This Laboratory Grown Diamond was created by Chemical Vapor Deposition (CVD) growth process and may include post-growth treatment.
Type IIa



February 14, 2024	Report No LG21405470	ROUND BRILLIANT	10.34 - 10.38 X 13 MM	4.02 CARAT'S	VS 1	IDEAL	69.2%	60%	Thin to Medium (Faceted)	Pointed	EXCELLENT	EXCELLENT	NONE	1691 LG21405470	Comments: This Heavy Crown Diamond was treated by Chemical Vapor Deposition (CVD) growth process and may include post-growth treatment.
GI	Color	Clarity	Depth	Table	Girdle	Culet	Polish	Symmetry	Fluorescence	Inscriptions(s)	Type I/IIa				

www.igi.org